

Clean and soft water for the home.

Reliable water conditioning products for hard water problems.

RESIDENTIAL
WATER SOFTENERS



A division of
WaterGroup

Hydrotech 
Your clear choice in water treatment.

All Hydrotech's residential water softeners include the following features:

- Durable filament wound mineral tanks consisting of a rotationally molded polyethylene liner and a high strength epoxy/fiberglass outer shell. Tanks are corrosion resistant and are Tested and Certified by WQA to NSF/ANSI Standard 44 for materials and structural integrity requirements.
- Brine tanks and cabinet enclosures are constructed of rugged, seamless, one-piece molded polyethylene. They are lightweight yet strong enough not to crack or leak.
- High quality softening resin.
- Quartz gravel support beds.

Our products are backed by a solid guarantee including;

- Control valves are covered by a five year parts warranty.
- Mineral tanks and brine tanks or cabinets are covered by a ten year warranty.

Optional water softener accessories, colors and styles available for many of these products.

Hydrotech® 5600SXT Valve Softeners

Softeners using the 5600SXT valve are available in meter initiated configurations. The SXT electronics of the valve provide both the owner and installer a simple to operate, user-friendly method of making adjustments to the control.

Features:

- Available in capacities with 0.5 to 2.5 cubic foot of resin.
- The 5600SXT meter initiated valve regenerates only when needed once a preset volume of water has passed through the softener.
- The standard regeneration occurs at 2:00 AM, but this can be easily adjusted to any other time of the day.
- The easy to read large backlit display alternates between the time of day and remaining usable volume prior to regeneration.
- An automatic override can be programmed to regenerate the valve after set number of days if regeneration has not been initiated by the meter due to low usage.
- Regeneration cycles are fully adjustable.
- Electrical: 24V / 60 Hz (120V to 24V wall mount transformer included).



Hydrotech® 5600 Valve Softeners

Softeners equipped with the 5600 valve are available with either automatic calendar clock initiated regeneration version or the Econominder meter initiated regeneration.

Features:

- Available in capacities with 0.5 to 2.5 cubic foot of resin.
- Calendar clock initiated valves are set to regenerate at preset intervals at 2:00 AM.
- Demand meter initiated valves are set to regenerate only when needed. The regeneration occurs at 2:00 AM once a preset volume of water has passed through the softener.
- Electrical: 120V / 60 Hz.



Hydrotech® 6700XTR Valve Softeners

These softeners, assembled with the 6700XTR valve, are available with either conventional co-current regeneration or a more efficient counter-current regeneration. The 6700XTR uses advanced electronics to provide diagnostics, additional programming features and uses a variable reserve.

Features:

- Available in capacities with 0.5 to 2.5 cubic foot of resin.
- Co-current and counter-current regeneration versions available.
- The 6700 meter initiated valve regenerates only when needed. Additionally the softener's reserve capacity is calculated automatically and varies with the average daily usage.
- Adjustable regeneration time.
- Automatic regeneration override can be programmed.
- Regeneration cycles are fully adjustable.
- Advanced diagnostics for troubleshooting.
- UV stable, sealed valve cover protects against moisture, dust and dirt.
- Enhanced full text backlit display: Easy to read and understand in dark areas.
- Power backup: Capacitor built into the XTR electronics maintains the time of day during a power failure. This eliminates the use of a 9V battery.
- New programming functions: Unit capacity, water hardness, capacity safety factor, volume override and more.
- Electrical: 24V / 60 Hz (120V to 24V wall mount transformer included).



Hydrotech® 7000 Valve Softeners

Softeners equipped with the 7000 control valve can achieve very high flow rates with only a small drop in pressure through the valve. The valve is built with the very latest in technology including all-composite construction, reliable optical electronics and quick connect clips which allow for easy installation and maintenance.

Features:

- Available in capacities with 0.75 to 4.0 cubic feet of resin.
- Both conventional clock initiated regeneration or meter initiated regeneration versions.
- Easy to read LED display and user-friendly, flexible programming.
- Standard variable reserve.
- Optional variable brining based on the reserve can be programmed.
- Automatic regeneration day override can be programmed.
- Optional high flow bypass valve available.
- Electrical: 24V/60 Hz (120V to 24V wall mount transformer included).



Hydrotech® 2510 Valve Softeners

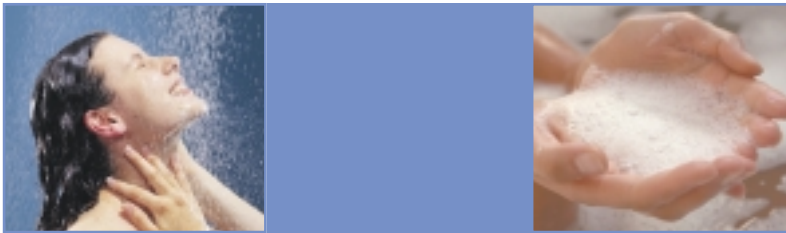
The 2510 valve, although primarily a filter valve, is also a versatile softener valve. Softeners using this valve are available in automatic calendar clock, meter initiated or SXT electronic meter initiated regeneration.

Features:

- Available in capacities with 0.5 to 2.5 cubic foot of resin.
- Calendar clock initiated valves are set to regenerate at preset intervals at 2:00 AM.
- Demand meter initiated valves are set to regenerate only when needed. The regeneration occurs at 2:00 AM once a preset volume of water has passed through the softener.
- 2510 valves with the SXT electronics also incorporate;
 - Adjustable regeneration time.
 - Easy to read large backlit display.
 - Automatic regeneration override can be programmed.
 - Regeneration cycles are fully adjustable.
- Electrical: 120V and 24V / 60 Hz (120V to 24V wall mount transformer included with SXT electronic equipped valves).



Inset: 2510 Valve with Mechanical Timer and Enviro Cover shown



Hydrotech® ProFlo Valve Softeners

ProFloSXT valve softeners benefit from reduced pressure drops through the valve and the versatile user friendly SXT electronic timer. These softeners are meter initiated and are available in conventional co-current regeneration or a more efficient counter-current regeneration version.

Features:

- Available in capacities with 0.75 to 2.5 cubic foot of resin.
- Co-current and counter-current regeneration versions available.
- The ProFloSXT meter initiated valve regenerates only when needed.
- The standard regeneration time occurs at 2:00 AM, but this can easily be adjusted to any other time of the day.
- The easy to read large backlit display alternates between the time of day and remaining usable volume prior to regeneration.
- An automatic override can be programmed to regenerate the valve after a set number of days if regeneration has not been initiated by the meter due to low usage.
- Regeneration cycles are fully adjustable.
- Electrical: 24V / 60 Hz (120V to 24V wall mount transformer included).



Hydrotech® TwinFlo 100SXT Valve Softeners

The TwinFlo softeners provide an uninterrupted supply of soft water, twenty-four hours a day. The system uses two mineral tanks. One is in standby while the other tank is in service until depleted. At this point, the tank in standby switches to service while the depleted tank regenerates.

Features:

- Available in capacities with 0.75 to 1.5 cubic foot of resin per tank.
- SE electronic control and meter initiated regeneration.
- Easy to read large backlit display.
- Automatic regeneration override can be programmed.
- Regeneration cycles are fully adjustable.
- Regeneration of depleted tank uses soft water for increased efficiency.
- Electrical: 24V / 60 Hz (120V to 24V wall mount transformer included).

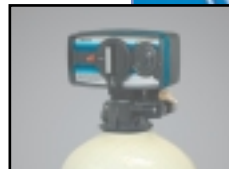


Hydrotech® Cabinet Enclosed Softeners

Cabinet softener models are available with either 5600 valves or 5600SXT valves. Cabinet models provide an attractive, durable enclosure that houses the tank, valve and salt storage all in one.

Features:

- Available in capacities with 0.5 and 1.0 cubic foot of resin.
- 5600 automatic clock initiated valve or meter initiated valve or 5600SXT electronic meter initiated valve.
- Durable, attractive cabinet.
- Electrical 5600: 120V / 60 Hz
- Electrical 5600SXT: 24V / 60 Hz (120V to 24V wall mount transformer included with SE electronic equipped valves).



Optional Accessories

Bypass valves, available in either fiber reinforced composite material or stainless



steel. They are simple and easy to operate and are very dependable. They quickly attach to the valve body, making installation fast and easy.

Our wrap around **tank jackets** and caps are constructed of high impact polystyrene.



Designed to fit around our fiberglass tanks, they feature a layer of insulation, virtually eliminating condensation and sweating on the tank.

Our softeners can incorporate **drip feeders,** specially formulated chemical products and alternative resin media. This allows the softener to easily remove small amounts of dissolved iron in the water.



NOTE: The models listed in the table below are shown with a blank that is completed with one of the valve types listed below.

For example: () - 948 - 100 with a 5600SXT meter initiated valve would be shown as; 5600SXTM - 948 - 100

Specifications & Performance - Twin Tank Models

Model	Capacity (grains) at Various Salt Dosages				Service Flow Rate ⁽²⁾ (usgpm)	Backwash Flow Rate (usgpm)	Resin Volume (cu.ft.)	Mineral Tank Size ⁽³⁾ (inches)	Brine Tank Size ⁽³⁾ (inches)	Brine Tank Salt Capacity (lbs)	Shipping Weight ⁽⁶⁾ (lbs)
	15lb/cu.ft.	10lb/cu.ft. ⁽¹⁾	6lb/cu.ft.	3lb/cu.ft.							
() - 835 - 50 ⁽⁴⁾	15000	12000	8500	6500	6	1.0	0.50	8 x 35	18 x 33	335	65
() - 844 - 75	22500	18000	12750	9750	8	1.5	0.75	8 x 44	18 x 33	335	70
() - 948 - 100	30000	24000	17000	13000	10	2.0	1.00	9 x 48	18 x 33	335	85
() - 1035 - 100 ⁽⁴⁾	30000	24000	17000	13000	10	2.4	1.00	10 x 35	18 x 33	335	90
() - 1047 - 125	37500	30000	21250	16250	12	2.4	1.25	10 x 47	18 x 33	335	110
() - 1054 - 150	45000	36000	25500	19500	12	2.4	1.50	10 x 54	18 x 33	335	125
() - 1252 - 200	60000	48000	34000	26000	13	3.5	2.00	12 x 52	18 x 33	335	150
() - 1450 - 250	75000	60000	42500	32500	13	5.0	2.50	14 x 50	21 x 36	355	190
() - 1465 - 300 ⁽⁵⁾	90000	72000	51000	39000	15	5.0	3.00	14 x 65	21 x 36	355	249
() - 1665 - 400 ⁽⁵⁾	120000	96000	68000	52000	20	7.0	4.00	16 x 65	21 x 36	355	322

Twin tank softener models available with the following valves:

5600 Valve Softeners – Clock Initiated: **5600CC**; L-plate Version: **5600CCL**; Meter Initiated: **5600MI**; L-plate Version: **5600MIL**

5600SXT Valve Softeners – Electronic Meter Initiated: **5600SXTM**

2510 Valve Softeners – Clock Initiated: **2510CC**; Meter Initiated: **2510MI**; Electronic Meter Initiated: **2510SXTM**

ProFlo Valve Softeners – Meter Initiated Downflow Regeneration: **ProFloMID**; Meter Initiated Upflow Regeneration: **ProFloMIU**

6700 Valve Softeners – Meter Initiated Downflow Regeneration: **6700MID**; Meter Initiated Upflow Regeneration: **6700MIU**

7000 Valve Softeners – Electronic Clock Initiated: **7000SEC**; Electronic Meter Initiated: **7000SEM**

Specifications & Performance - Cabinet Models

Model	Capacity (grains) at Various Salt Dosages				Service Flow Rate ⁽²⁾ (usgpm)	Backwash Flow Rate (usgpm)	Resin Volume (cu.ft.)	Mineral Tank Size ⁽³⁾ (inches)	Cabinet Size ⁽³⁾ (inches)	Cabinet Salt Capacity (lbs)	Shipping Weight (lbs)
	15lb/cu.ft.	10lb/cu.ft. ⁽¹⁾	6lb/cu.ft.	3lb/cu.ft.							
CAB() - 835 - 50	15000	12000	8500	6500	6	1.0	0.50	8 x 35	21 x 13 x 44	315	65
CAB() - 1035 - 100	30000	24000	17000	13000	10	2.4	1.00	10 x 35	21 x 13 x 44	300	90

Cabinet softener models available with the following valves:

5600 Valve Softeners – Clock Initiated: **5600CC**; Meter Initiated: **5600MI**

5600SXT Valve Softeners – Electronic Meter Initiated: **5600SXTM**

Specifications & Performance - TwinFlo 100SXT Models

Model	Capacity (grains) at Various Salt Dosages				Service Flow Rate ⁽²⁾ (usgpm)	Backwash Flow Rate (usgpm)	Resin Volume (cu.ft.)	Mineral Tank Size ⁽³⁾ (inches)	Brine Tank Size ⁽³⁾ (inches)	Brine Tank Salt Capacity (lbs)	Shipping Weight (lbs)
	15lb/cu.ft.	10lb/cu.ft. ⁽¹⁾	6lb/cu.ft.	3lb/cu.ft.							
TwinFlo - 844 - 75	45000	36000	25500	19500	8	1.5	1.50	8 x 44	18 x 33	335	130
TwinFlo - 948 - 100	60000	48000	34000	26000	10	2.0	2.00	9 x 48	18 x 33	335	160
TwinFlo - 1047 - 125	75000	60000	42500	32500	11	2.4	2.50	10 x 47	18 x 33	335	170
TwinFlo - 1054 - 150	90000	72000	51000	39000	10	2.4	3.00	10 x 54	18 x 33	335	240

TwinFlo softener models use the TwinFlo 100e valve.

ADDITIONAL INFORMATION: Operating Temperature Range = 34° to 110°F (1° to 43°C). Operating Pressure Range = 20 to 120 psi (1.37 to 8.27 bar). The manufacturer reserves the right to make product improvements which may deviate from the specifications and descriptions shown above, without obligation to change previously manufactured products or to note the change.

CAUTION: These products are not intended to be used to treat water that is microbiologically unsafe or of unknown quality without adequate disinfection before or after the system.

NOTES: ⁽¹⁾ 10lb/cu.ft. salt dosage is the standard factory setting. ⁽²⁾ The Service Flow Rate given will not exceed a pressure drop of 15psi. ⁽³⁾ Dimensions of cylindrical tanks shown are diameter (or width) x height. Cabinets shown as length x width x height. ⁽⁴⁾ These size units NOT available as 7000 valve softeners. ⁽⁵⁾ These size units ONLY available as 7000 valve softeners. ⁽⁶⁾ Shipping weights may vary slightly with different valve options available for each size of softener.