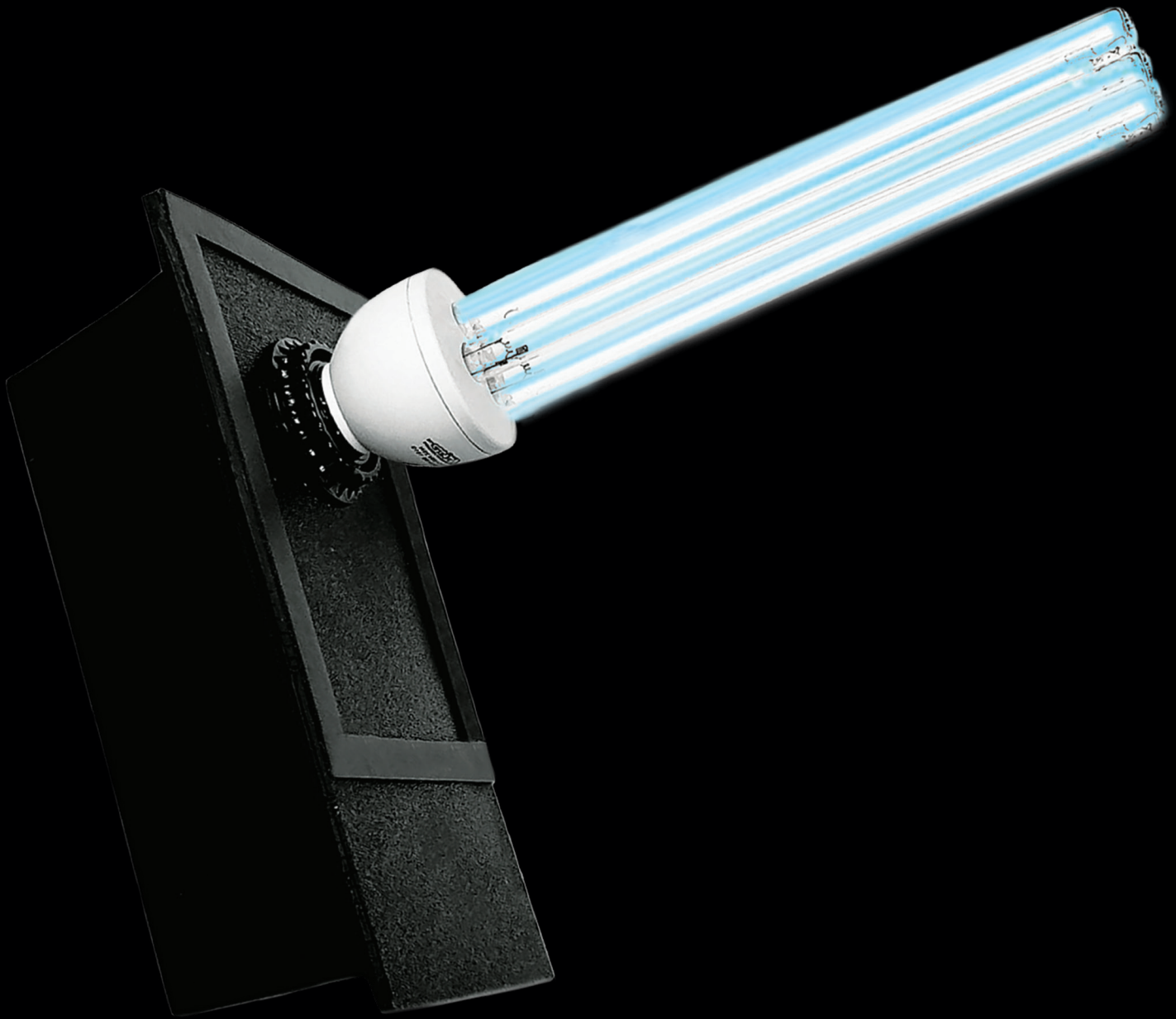


Air-Care™

UVC MAX 25

WHOLE HOUSE AIR PURIFYING SYSTEM



USER MANUAL



SAFETY WARNING



WARNING: NEVER EXPOSE EYES OR SKIN TO UVC LIGHT FROM ANY SOURCE.

- Looking directly at the UVC light may cause permanent eye damage or blindness.
- Never operate a UVC MAX 25 out of the plenum.
- Unit is designed for a closed duct system; do not mount near a supply or a return air opening.
- All duct openings in direct line of site of the UV light must be sealed with aluminum tape or equivalent sealing methods.
- Wear UVC protected safety glasses during installation. They will help block accidental UVC exposure to eyes.

WARNING: UVC LIGHT WILL BREAK DOWN PLASTIC MATERIALS NOT RATED FOR UVC EXPOSURE SUCH AS WIRE INSULATION, FLEX DUCT, DRAIN PANS AND HUMIDIFIERS.

- The unit must be mounted at least 30" from the above stated type of materials.
- If it is necessary to mount the unit in direct line of site of these types of materials, they must be shielded with aluminum foil, aluminum foil tape, or sheet metal.

WARNING: NEVER TOUCH BROKEN BULB OR INTERNAL CONTENTS OF BULB THE BULB CONTAINS MERCURY.

- After opening the carton, unpack and inspect the unit and bulb for damage. Do not install this unit if any damage is noticeable. If bulb is damaged, cracked or broken, do not touch bulb or other contents in carton. Close carton and return to seller immediately
 - In case of accidental exposure to internal contents of bulb, wash hands and any other affected skin area with mild detergent. Remove affected clothing immediately. If skin surface is pierced, seek medical attention immediately.
- NOTE: If you touch the glass of the bulb, you should wipe the glass clean with isopropyl alcohol and a lint free wipe. If the bulb is not cleaned, the film of hand oils causes a reduction in the light intensity

WARNING: BEFORE INSTALLING OR SERVICING A HUMIDIFIER, AIR FILTER, HEAT SYSTEM, OR THIS UNIT, ETC, ALWAYS TURN ALL POWER OFF AND HAVE UNIT UNPLUGGED.

Electrical shock can cause personal injury or death. Never expose eyes or skin to direct UVC light from any source.

WARNING: TO PREVENT WATER DAMAGE OR ELECTRIC SHOCK, DO NOT MOUNT UNIT UNDER A HUMIDIFIER. DO NOT MOUNT THIS UNIT OUTDOORS

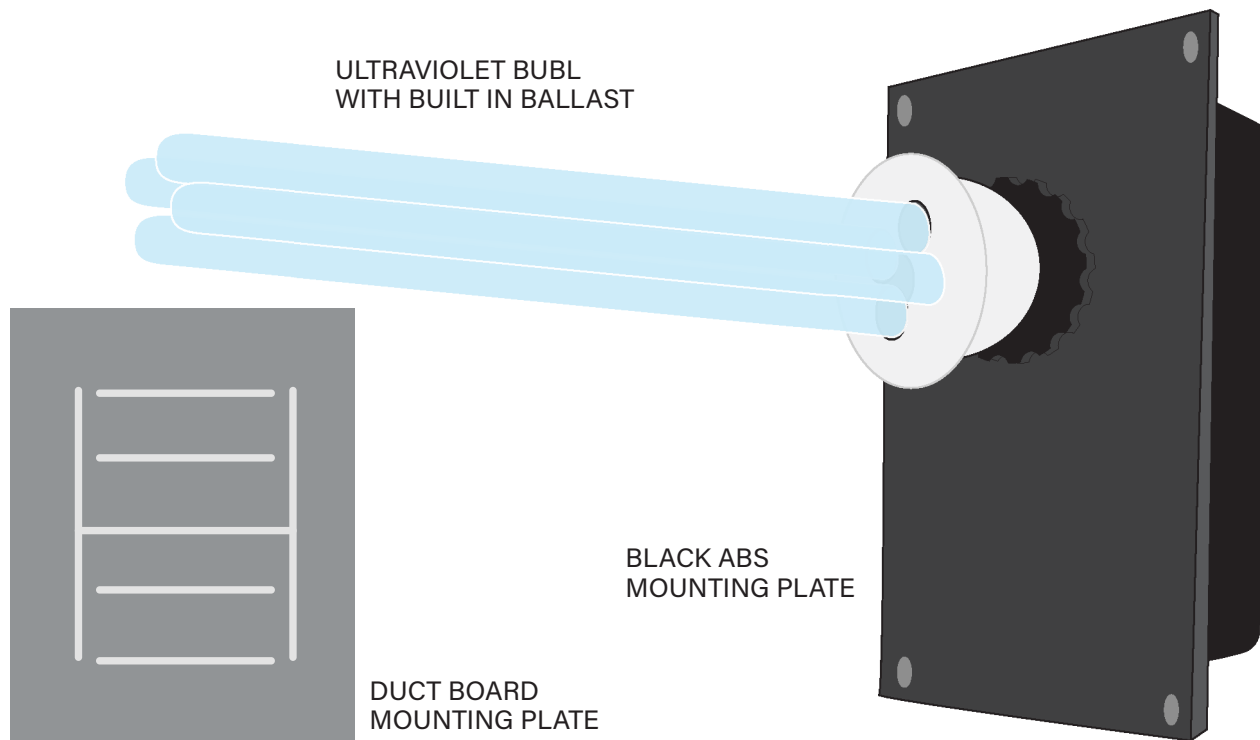
This product is designed for indoor installation only (i.e attics, crawl spaces, basements, etc.) and for use on gas fired, oil fired, electric and split system heat pump forced air systems*. This product is NOT designed to be mounted outside on gas fired or heat pump packaged units**.

WARNING: NEVER EXPOSE EYES OR SKIN TO UVC LIGHT FROM ANY SOURCE. LOOKING DIRECTLY AT THE UVC LIGHT MAY CAUSE PERMANENT EYE DAMAGE OR BLINDNESS. NEVER OPERATE THE UVC MAX 25 OUT OF THE PLENUM AVOID TOUCHING THE GLASS PORTION OF THE BULB WITH YOUR HANDS.

*It is important to understand the 24 Volt wiring in the Air Handler to avoid causing damage to the UVC /1x 25 24 volt unit or to the Air handler. If you do not have HVAC knowledge, contact Air-Care or have a licensed contractor install this unit for you.

UVC MAX 25

WHOLE HOUSE AIR PURIFYING SYSTEM



The UVC Max 25 units are designed to emit powerful ultraviolet light rays, which sterilize and reduce airborne microorganisms as they pass through a home heating or air conditioning system. They are installed in the main supply or return duct of the home system and operate continuously to automatically purify air in the home 24 hours a day.

These products are not sold as a medical device and are not for the purpose of diagnosis of any disease or condition nor for use in the mitigation, treatment, or prevention of any disease or condition.

WARNING Never expose eyes or skin to UVC light from any source. Looking directly at the UVC light may cause permanent eye damage or blindness. Never operate the UVC MAX 25 out of the plenum. Avoid touching the glass portion of the bulb with your hands.

**FOR REPLACEMENT BULBS
OR PARTS PLEASE CALL**

(800) 322-9919

www.Air-Care.com • Email: cs@air-care.com

Items Included in Kit:

- A. Ultraviolet Bulb with Built-In Ballast
- B. Black ABS Mounting Plate
- C. Power Cord & Bulb Socket
- D. Duct Board Metal Mounting Plate
- E. Sheet Metal Mounting Screws (4)
- F. Instruction Sheet

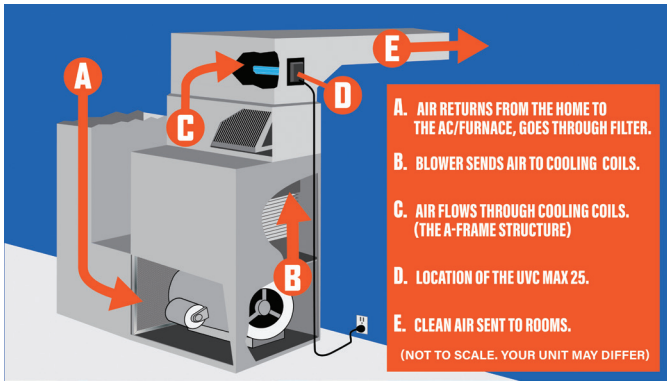
**Visit our UVC
Max 25 Page at
UVCMax25.com
for information
about the App.**



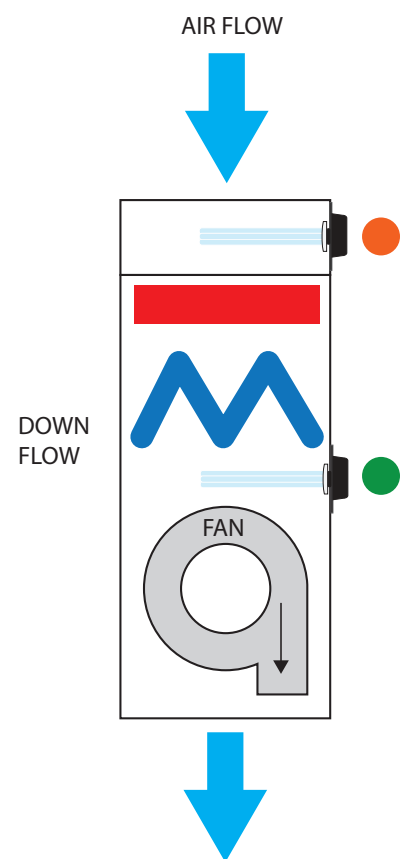
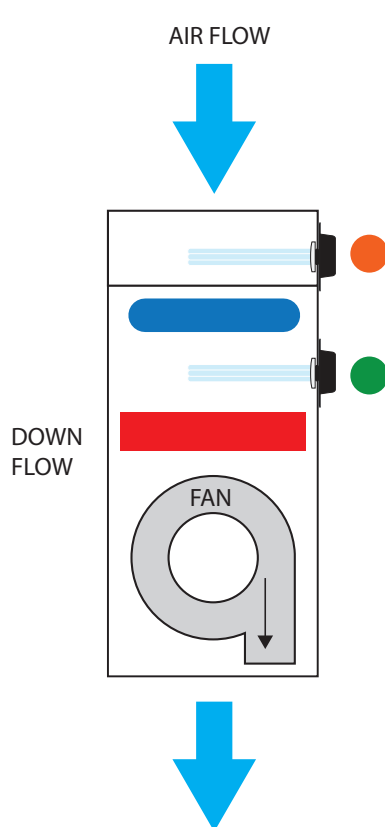
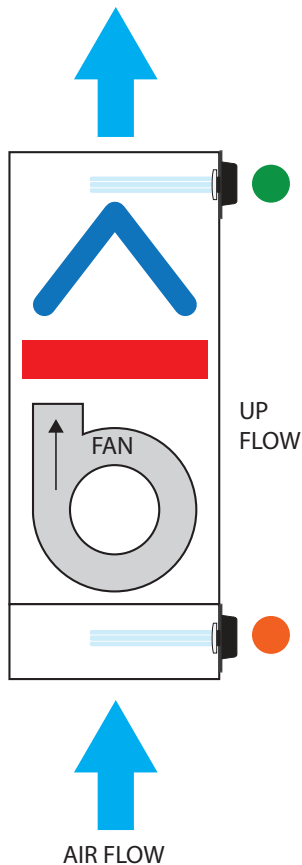
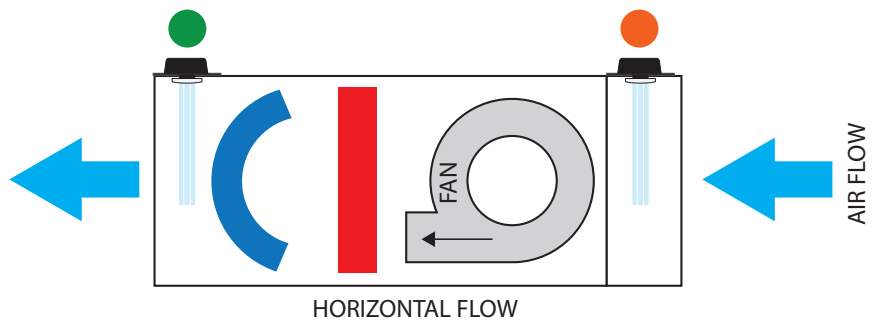
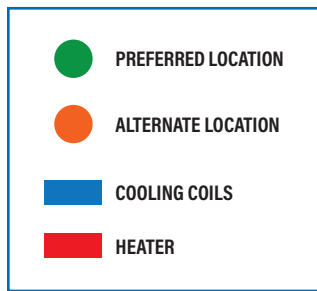
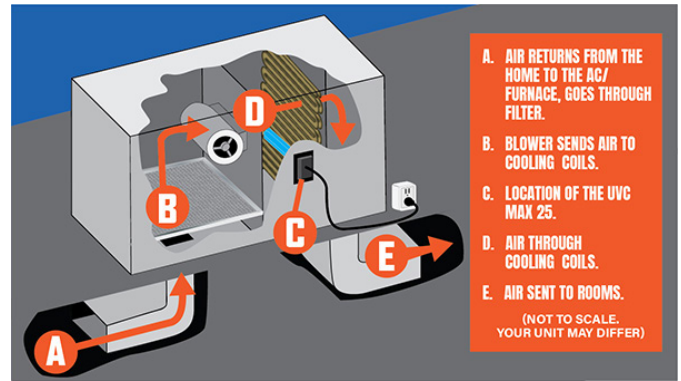
INSTALLING THE UVC MAX 25

Heating and Cooling configurations vary greatly. The best location for the UVC light is near the cooling coils, which can be Flat, Curved, or in the shape of an "V," "N" or "W". The best alternate location is in the return.

A FRAME COOLING COIL SAMPLE

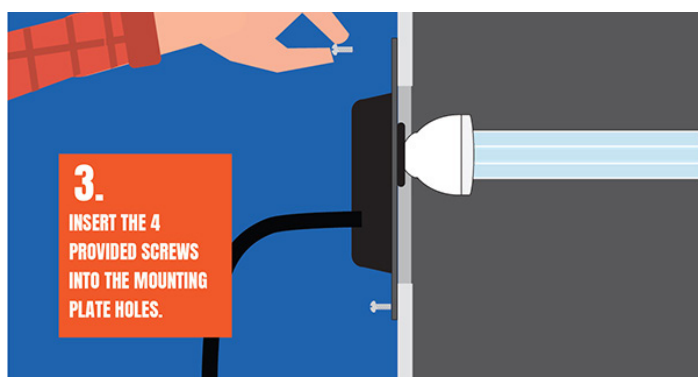
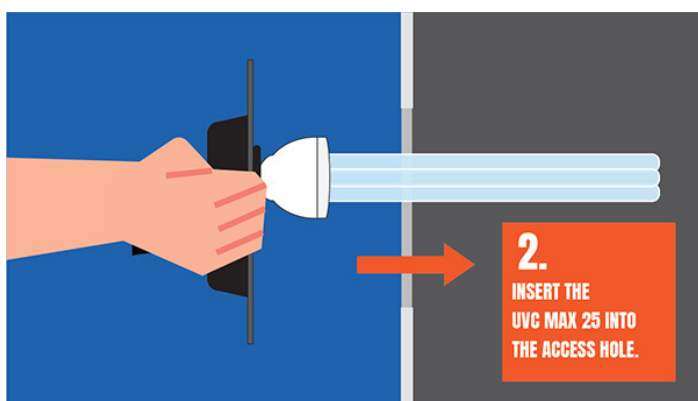
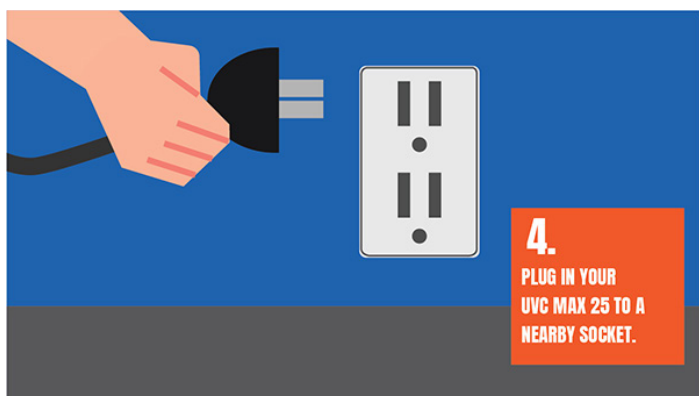
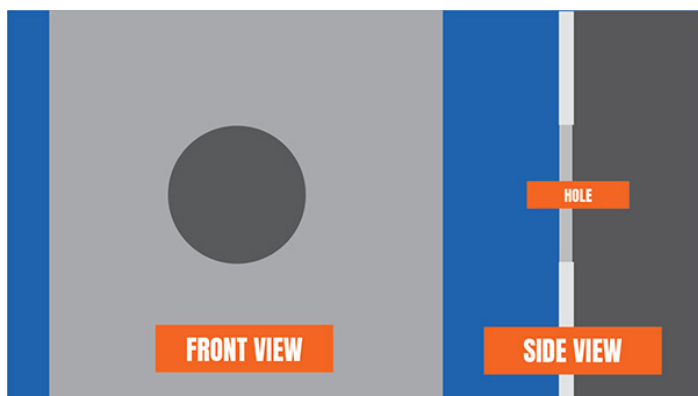
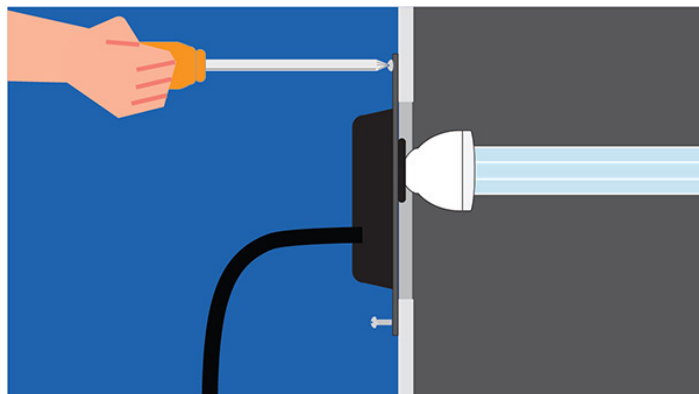
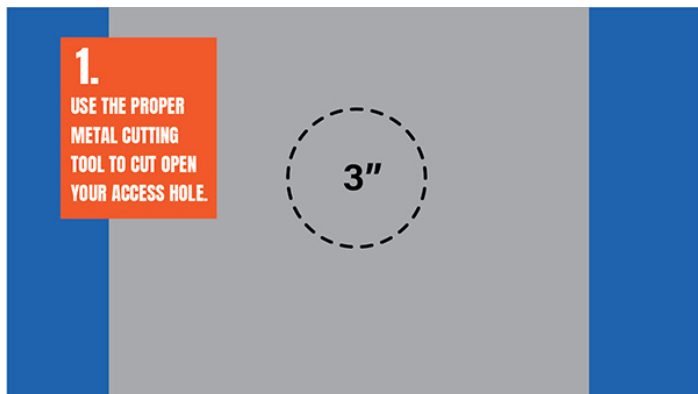


FLAT COOLING COIL SAMPLE



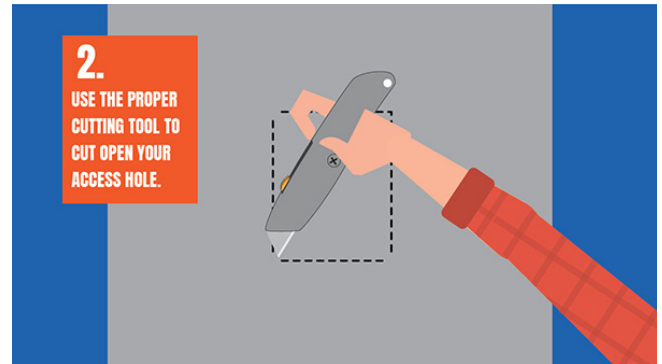
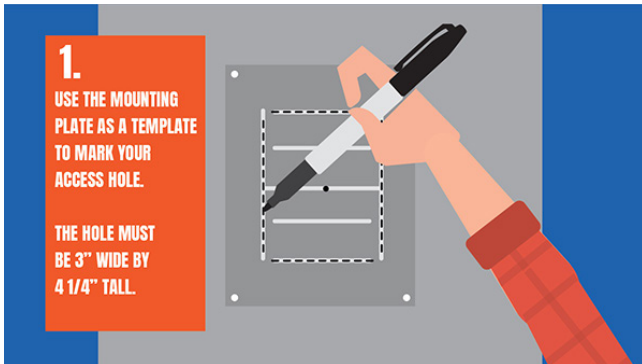
INSTALL: METAL DUCT

CAUTION: INVESTIGATE AND DETERMINE THE LOCATION OF THE A COIL PRIOR TO DRILLING HOLES IN DUCT FOR MOUNTING UNIT.



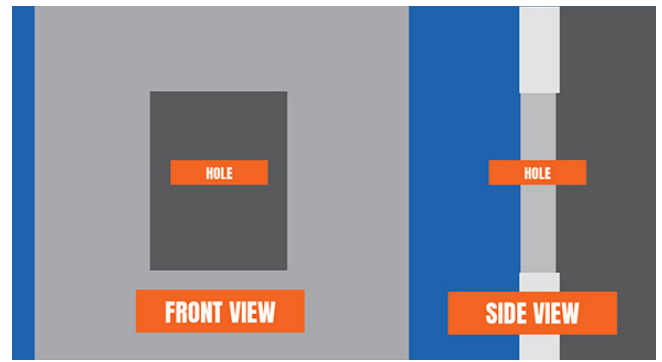
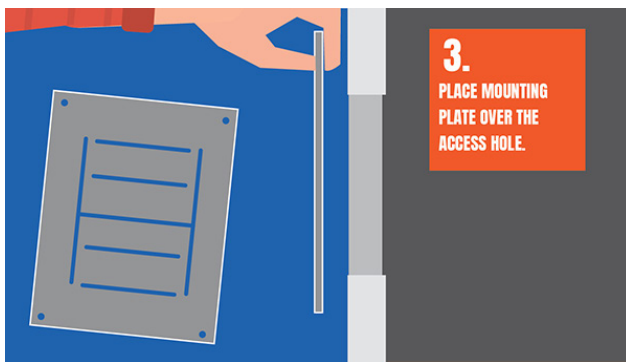
1. Locate a suitable location for the unit downstream of the coil in the supply plenum or in the return plenum; preferably downstream from the air filter. For optimum "cleaning" effect on the coil, mount the unit in the supply plenum as close as possible to the coil.
2. Drill Pilot Hole for Large Hole Cutter. (Figure 1)
3. Cut out the large opening using a drill and a 3 1/2" hole saw.
4. Attach Power Cord I Bulb Socket to Black ABS Plate.
5. Install bulb into socket. Do not handle the bulb with bare hands. Oils on the hands tend to shorten bulb life. (Figure 2)
6. Mount the Max 25 onto the plenum with the supplied self tapping sheet metal screws. (Figure 3)
7. Plug the power supply cord into a standard electric wall outlet for the 110 Volt Model or connect the thermostat wires to a 24 volt source that is always powered on in the Air Handler for the 24 volt Model*. Turn on the Max 25 Power Switch. Check bulb operation by looking through the view porthole. (Figure 4)
8. If the blue glow is not seen, make sure the base is properly installed onto the duct.
9. With metallic tape (or similar), seal all joints and seams of the plenum near the mounting location to reduce any direct viewing of light.

INSTALL: DUCT BOARD

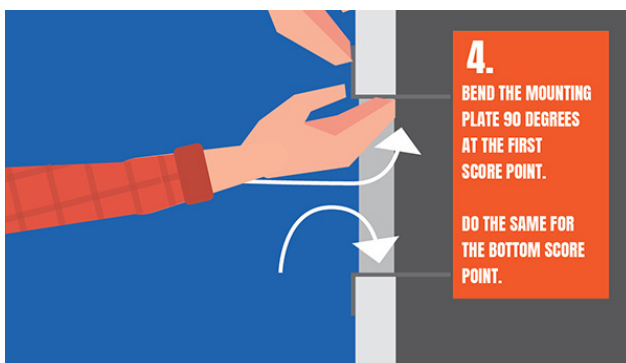


1 When the proper location for the UVC Max 25 has been selected, use the duct board mounting plate (5" x 7" overall) to draw lines where the duct board must be cut, 3" wide by 4-1/4" tall hole. (Figure 1)

2 Cut the rectangular hole and remove the loose piece of duct board. (Figure 2)

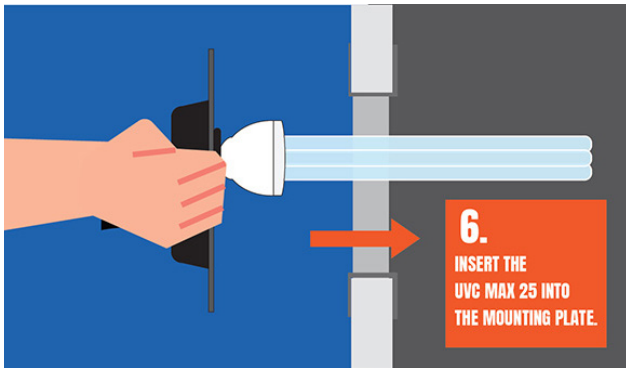


3 Place mounting plate over the access hole. (Figure 3)

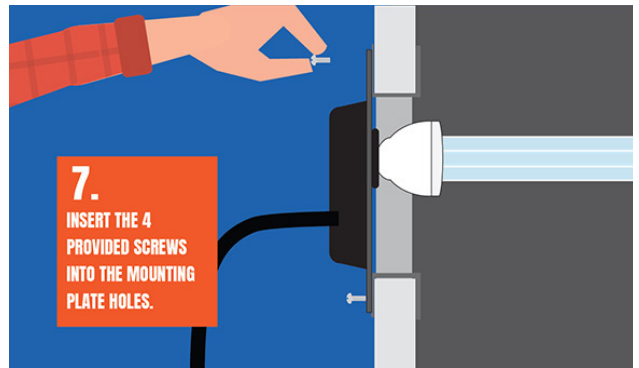


4 Now bend the mounting plate upper and lower tabs 90 degrees and with the rectangular opening in the plate closer to the top, insert it into the hole in the Duct Board. (Figure 4)

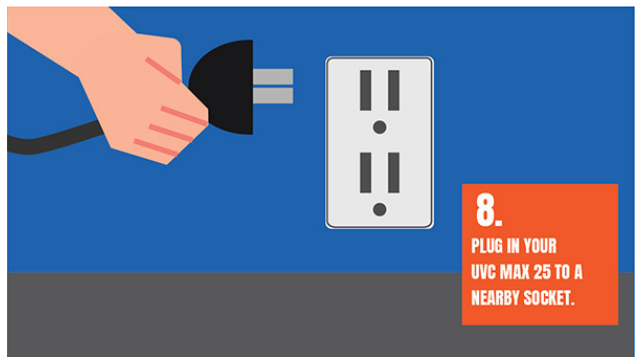
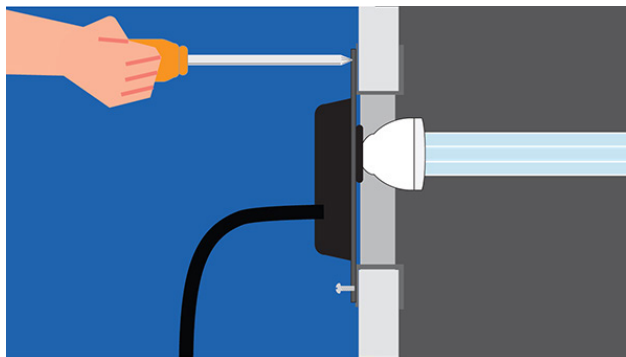
5 With the mounting plate in the opening, bend the secondary tabs another 90 degrees so that it is secured in the opening. (Figure 5)



6 The mounting plate is now ready for the UVC Max 25 to be installed in the same manner it would be installed into a metal duct. (Figure 6)



7 Place the provided screws into the pre-drilled holes and screw all 4 into place (Figure 7)



8 Plug in your UVC MAX 25. (Figure 8)

TROUBLESHOOTING GUIDE

1. MAKE SURE THE UNIT HAS POWER FROM THE WALL OUTLET FOR THE 120 VOLT VERSION OR FROM THE 24 VOLT CIRCUIT OF THE AIR HANDLER.
2. MAKE SURE THE SWITCH IS IN THE ON POSITION.
3. IF UNIT STILL DOES NOT LIGHT UP AFTER REPLACING BULB, REPLACE UNIT.

CLEAN-UP OF BROKEN BULBS

UVC bulbs contain a small amount of mercury, like a typical fluorescent bulb. **DO NOT TOUCH** any of the mercury with your bare hands.

1. While wearing disposable, non-absorbent protective gloves, pick up the large pieces of glass.
2. Then, vacuum the entire area with a standard household vacuum cleaner, ensuring the removal of all bulb material.
3. Dispose of the pieces of glass, the vacuum cleaner bag, and the disposable gloves in a sealed garbage bag .
4. Check with your local waste management authority for local disposal or recycling requirements.
5. Wash your hands. Then remove and wash clothes for added safety measures.

MAINTENANCE

1. We recommend inspecting and cleaning bulb at least every 6 months depending upon your home environment and condition of conventional filters and duration of use and their replacement cycle.

2. To maintain the bulbs maximum output intensity, replace your UVC Max 25 Air Purifying System bulb annually, depending upon your home environment using the replacement procedure below. The bulb should operate continuously for maximum bulb life and light effectiveness.

BULB REPLACEMENT PROCEDURE

1. Loosen mounting screws.
2. Remove the unit from the duct.
3. Remove the old bulb from the socket.
4. Install replacement bulb into socket. Do not handle the bulb with bare hands. Oils on the hands tend to reduce bulb life. Verify bulb is secure in socket so it will not fall out into the duct.
5. Wipe off the glass with Isopropyl alcohol and a lint free wipe.
6. Re-attach the unit to the duct with 4 mounting screws.
7. After unit MAX 25 is firmly in place, plug the 110 Volt version power cord into a standard electrical wall outlet and/or restore power to the Air handler for the 24 Volt version. Check bulb operation by looking through the view porthole. A blue glow should be seen in the duct.

UV bulbs contain a small amount of mercury, like a typical fluorescent bulb. Check with your local waste management authority for local disposal or recycling requirements.

WARNING: UNPLUG UNIT FROM OUTLET BEFORE COMMENCING INSPECTION AND CLEANING.

NOTE: WEAR DISPOSABLE, NON-ABSORBENT PROTECTIVE GLOVES PRIOR TO INSPECTION PROCEDURE IN CASE OF ACCIDENTAL BREAKAGE OF GLASS.

WARNING: TURN OFF THE UVC MAX 25 AND UNPLUG THE 710 VOLT MODEL OR SHUT OFF THE AIR HANDLER FOR THE 24 VOLT MODEL BEFORE STARTING REPLACEMENT PROCEDURE.

NOTE: WEAR DISPOSABLE, NON-ABSORBENT PROTECTIVE GLOVES PRIOR TO INSPECTION PROCEDURE IN CASE OF ACCIDENTAL BREAKAGE OF GLASS.

NOTE: IF BLUE LIGHT LEAKS THROUGH ANY PORTION OF PLENUM AND/OR AROUND MOUNTING PLATE, TURN OFF THE FV/AX 25 IMMEDIATELY AND SEAL AFFECTED AREAS AND/OR ROTATE POWER UNIT AND REPEAT STEPS AS NEEDED

WARNING: NEVER TOUCH BROKEN BULBS OR INTERNAL CONTENTS OF A BULB. THESE PARTS CONTAIN MERCURY

NOTE: IN CASE OF ACCIDENTAL EXPOSURE TO INTERNAL CONTENTS OF BULB, WASH HANDS AND ANY OTHER AFFECTED SKIN AREA WITH MILD DETERGENT. REMOVE AFFECTED CLOTHING IMMEDIATELY IF SKIN SURFACE IS PIERCED, SEEK MEDICAL ATTENTION IMMEDIATELY

UVC MAX 25 LIMITED WARRANTY

Air-Care warrants this product to be free from defects in materials and workmanship to the original purchaser for a period of One (1) year from the date of purchase

Warranty is extended to the original purchaser and is not transferrable.

This warranty does not extend to any damage to a product caused by or attributable to freight damage, abuse, misuse, improper or abnormal usage. Warranty is also void if the product has been modified or altered in any way.

The purchaser is responsible for the cost of shipping the product to Air-Care's facility for evaluation. If found to be defective and covered by the terms of this warranty, Air-Care will pay FedEx ground shipping charges on the repaired or replaced item back to the purchaser's location. Any additional expedited service charges for quicker shipping shall be born by the purchaser. If the product or component is not found to be a warranty issue, the purchaser will be responsible for return shipping charges.

Air-Care is not responsible or liable for indirect, special, or consequential damages arising out of or in connection with the use of performance of the product; damages with respect to any economic loss, loss of property, loss of revenues or profits, loss of use, or other incidental or consequential damages of whatsoever nature.

The warranty extended hereunder is in lieu of any and all other warranties, and any implied warranties of any type.

This warranty gives you specific rights.

These rights and others vary from state to state.



FOR REPLACEMENT BULBS OR PARTS PLEASE CALL
MANUFACTURED BY AIR-CARE 3868 EAST POST ROAD LAS VEGAS, NV 89120
(800) 322-9919 | www.Air-Care.com | cs@air-care.com