

COMMERCIAL FILTERS | Ecer-Pure SGF Series



Swift
GREENFILTERS

*An environmental
breakthrough in
drinking water filters*

Do you know what is in your water?

SWIFT versatile capabilities - No other manufacturers match our capabilities.

We use coconut carbon which has 50% more micropores for capturing and holding contaminants than any other carbon.

- CTO + Cyst + Lead
- VOC + Cyst + Lead
- VOC + Cyst + Lead + Pharmaceutical
- VOC + Cyst + Lead + Chloramine
- VOC + Cyst + Lead + Pharmaceutical + Chloramine

2

Offshore

- CTO only
- Substandard CTO
- Offered at low price

Swift Green Filters

Swift's estimated % reduction up to:

Lead – 95%	Lindane – 95%
Cysts – 99%	2,4-D – 95%
Chlorine – 95%	Mercury – 95%
Turbidity – 95%	Toxaphene – 95%
Asbestos – 95%	P-Dichchlorobenzene – 95%
Atrazine – 95%	Benzene – 95%

OEM

- Not all OEMs remove as many contaminants
- OEMs do not eliminate lead from water



Coffee & Tea

Water filtration products provide consistent, high quality hot beverages and reduces unscheduled service calls associated with hard scale build-up.

Cold Beverage

Water filtration products provide consistent, high quality, carbonated and non-carbonated beverages, reduce service costs, and extend post-mix equipment life.

Water with higher chlorine levels can dilute the flavor of fountain drinks, requiring a greater ratio of syrup per dispensed drink to maintain flavor.

Ice

Water filtration products for ice provide consistent, high quality water for commercial ice machines by reducing sediment and chlorine taste and odor. Built-in scale inhibition helps reduce equipment maintenance and replacement costs.

Scale:

Hard water is a description for water that contains a high dissolved mineral content. Water is soft when it falls from the sky as rain. As it travels through rock and soil, it dissolves calcium and magnesium, and, to a lesser extent, other minerals in small amounts. Unless you have a private well, your tap water is processed by a municipal water treatment plant to remove some of the mineral content and other impurities, but calcium (calcium carbonate) and magnesium (dolomite) will generally not be removed since they are dissolved in the water. While these minerals aren't harmful to your health, they affect the properties of the water and its effectiveness for washing and cleaning. Hard water causes scaling inside the machine. Scale is the left over mineral deposits that are formed after the hard water passes through; this is also known as lime scale.

Sediment:

After flocculation, the water and floc move slowly through large basins known as sedimentation or settling basins. The water moves very slowly through these basins due to their large size. This allows the floc to settle to the bottom of the basin. The floc that falls to the bottom of the basins is collected into a hopper by large rotating scrapers where it is removed several times daily by the plant operators. Clear water above the floc layer (referred to as treatment residuals) flows out of the sedimentation basin and to the filters. Removal of particles in the sedimentation basin improves the operation of the filters that comprises the next treatment process after sedimentation.

The sedimentation process removes many particles including clay and silt based turbidity, natural organic matter, and other associated impurities. These impurities include microbial contaminants, toxic metals, synthetic organic chemicals, iron, manganese and humic substances. Humic substances come from soil are produced within natural water and sediments by chemical and biological processes such as the decay of vegetation. Removal of humic substances from drinking water is desirable since they form disinfection byproducts when chlorine is added to the water. At high concentrations, disinfection by-products such as trihalomethanes are a public health concern.

Chlorine:

Chlorine is a highly efficient disinfectant, and it is added to public water supplies to kill disease-causing bacteria that the water or its transport pipes might contain. Chlorine introduced into the water supply reacts with other naturally occurring elements to form toxins called trihalomethanes (THMs), which eventually make their way into our bodies. THMs have been linked to a wide range of human health maladies ranging from asthma and eczema to bladder cancer and heart disease.

Ever Pure-SGF Series

Inch
MM

Length:
10
254



Length:
11.14
283



SGF 9634 Series

Filters	Page	Filters	Page
SGF-96-01 VOC-L-S	7	SGF-96-06 CTO	12
SGF-96-02 VOC-L	8	SGF-96-07 VOC	13
SGF-96-03 VOC-L-AG-S	9	SGF-96-08 VOC-S	14
SGF-96-04 VOC-L-Chloro-S	10	SGF-96-09 CTO	15
SGF-96-05 CTO-S	11	SGF-96-10 CTO-S	16

SGF H104 Series

Filters	Page
SGF-96-11 CTO	17
SGF-96-12 CTO-S	18

Ever Pure-SGF Series

Inch
MM

Length:
14.5
368



Length:
18.6
472



SGF H54 Series

Filters	Page	Filters	Page
SGF-96-13 VOC-L	19	SGF-96-18 VOC-AG	24
SGF-96-14 VOC-L-S	20	SGF-96-19 VOC-AG-S	25
SGF-96-15 VOC-L-AG-Chlora-L-S	21	SGF-96-20 CTO	26
SGF-96-16 CTO-S	22	SGF-96-21 CTO-S	27
SGF-96-17 CTO-S	23	SGF-96-22 VOC-AG	28
		SGF-96-23 VOC-AG-S	29

SGF 7CB Series

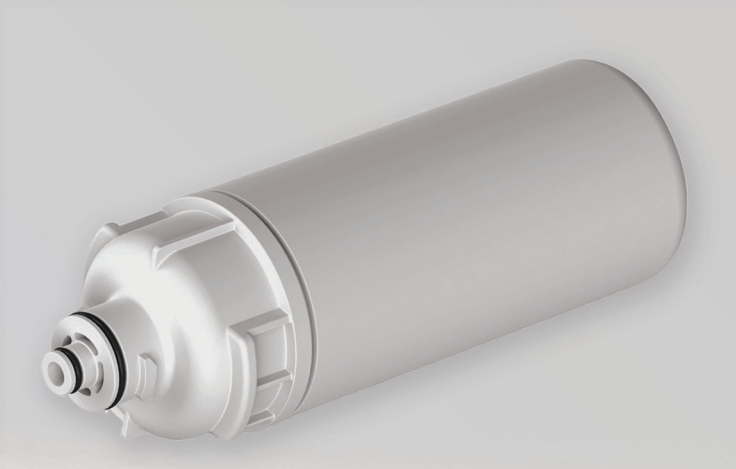
Filters	Page	Filters	Page
SGF-96-24 VOC-L	30	SGF-96-32 VOC-Chlora	38
SGF-96-25 VOC-L-S	31	SGF-96-33 CTO-S	39
SGF-96-26 VOC-IONX-S	32	SGF-96-34 CTO	40
SGF-96-27 VOC-IONX	33	SGF-96-35 VOC-S	41
SGF-96-28 CTO	34	SGF-96-36 VOC	42
SGF-96-29 VOC-Chlora	35	SGF-96-37 CTO	43
SGF-96-30 VOC-AG	36	SGF-96-38 CTO-AG-S	44
SGF-96-31 VOC-AG-S	37	SGF-96-39 VOC-S	45
		SGF-96-40 CTO-S	46

*REPLACEMENT FOR: EV9634-26



Reductions & Applications:

- VOC, CTO, Cyst, Sediment, Lead, Scale
- Water Coolers, Drinking Fountains, Food Service, Vending Machine, Coffee Service



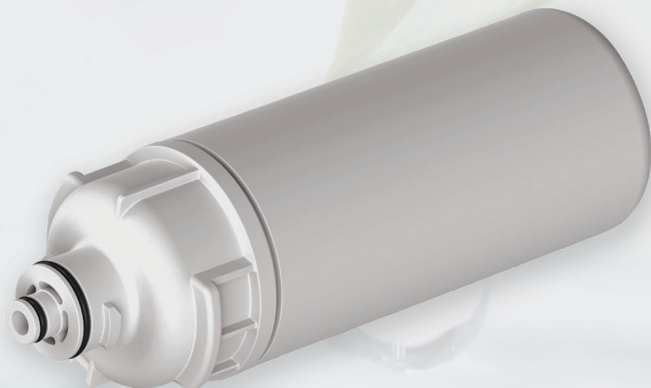
REPLACEMENT FOR:

EV9634-26, EV9634-06, EV9635-06, EV9612-76, EV9612-66

Max. Operating Temperature:	38°C/100°F
Min. Operating Temperature:	2°C/35°F
Max. Working Pressure:	689kPa/100psi
Min. Working Pressure:	138kPa/20psi
Rated Capacity: VOC	2,839 litres / 750 gallons
Rated Capacity: CTO	22,712 litres / 6,000 gallons
Flow Rate:	0.75 gpm
Micron Rating:	0.5 m
Single Filter:	10.25h X 3.35d Inch/260h X 85.15d MM

***REPLACEMENT FOR: EV9601-12**

SGF
96-02
VOC-L



8

Reductions & Applications:

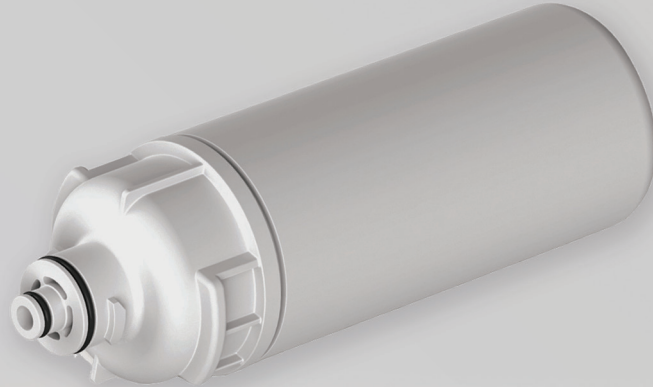
- VOC, CTO, Cyst, Sediment, Lead,
- Vending Machine

REPLACEMENT FOR:

EV9601-12, EV9618-07

Max. Operating Temperature:	38°C/100°F
Min. Operating Temperature:	2°C/35°F
Max. Working Pressure:	689kPa/100psi
Min. Working Pressure:	138kPa/20psi
Rated Capacity: VOC	2,839 litres / 750 gallons
Rated Capacity: CTO	22,712 litres / 6,000 gallons
Flow Rate:	0.75 gpm
Micron Rating:	0.5 m
Single Filter:	10.25h X 3.35d Inch/260h X 85.15d MM

***REPLACEMENT FOR: EV9634-06**



Reductions & Applications:

- VOC, CTO, Cyst, Sediment, Lead (SILVER-NANO) (inhibits growth of bacteria), Scale
- Water Coolers, Drinking Fountains, Coffee Service

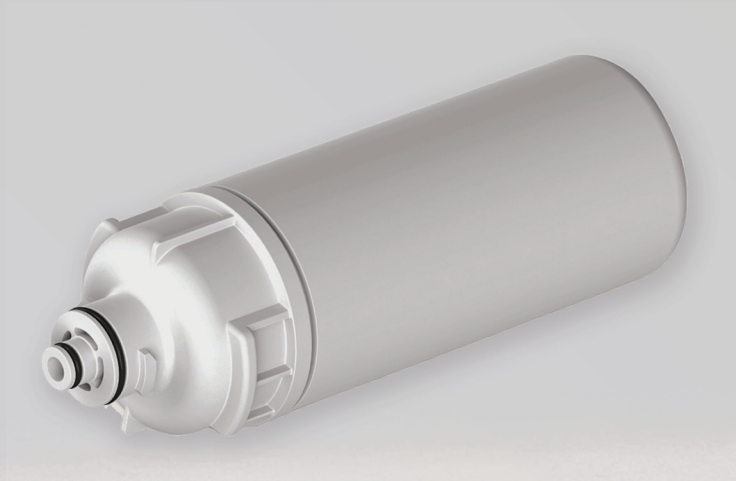
REPLACEMENT FOR:

EV9634-06, EV9618-02, EV9601-12, EV9618-07

Max. Operating Temperature:	38°C/100°F
Min. Operating Temperature:	2°C/35°F
Max. Working Pressure:	689kPa/100psi
Min. Working Pressure:	138kPa/20psi
Rated Capacity: VOC	5,678 litres / 1,500 gallons
Rated Capacity: CTO	22,712 litres / 6,000 gallons
Flow Rate:	0.75 gpm
Micron Rating:	0.5 m
Single Filter:	10.25h X 3.35d Inch/260h X 85.15d MM

***REPLACEMENT FOR: EV9692-96**

SGF
96-04
VOC-L-Chlora-S



10

Reductions & Applications:

- VOC, CTO, Cyst, Sediment, Lead, Chloramine, Scale
- Coffee Service

REPLACEMENT FOR:

EV9692-96, EV9692-96

Max. Operating Temperature:	38°C/100°F
Min. Operating Temperature:	2°C/35°F
Max. Working Pressure:	689kPa/100psi
Min. Working Pressure:	138kPa/20psi
Rated Capacity: VOC	1,703 litres / 450 gallons
Rated Capacity: CTO	22,712 litres / 6,000 gallons
Flow Rate:	0.75 gpm
Micron Rating:	0.5 m
Single Filter:	10.25h X 3.35d Inch/260h X 85.15d MM

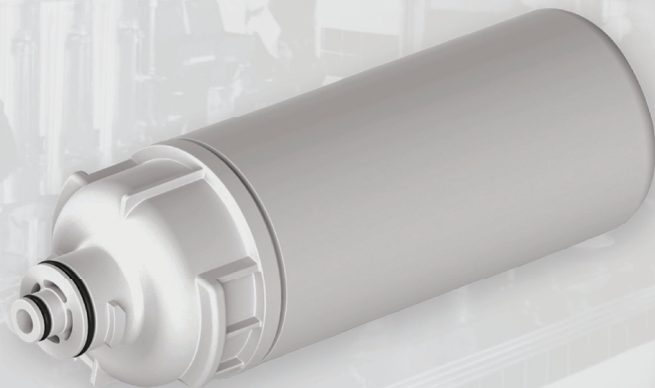
***REPLACEMENT FOR: EV9618-36**



11

Reductions & Applications:

- CTO, Sediment, Scale
- Food Service, Vending Machine, Coffee Service



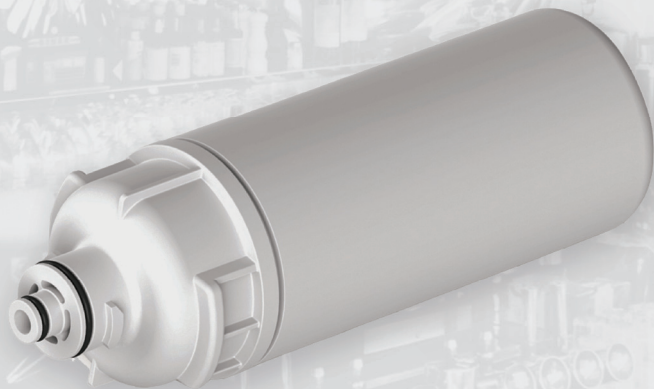
REPLACEMENT FOR:

EV9617-06, EV9617-22, EV9618-36, EV9751-11

Max. Operating Temperature:	38°C/100°F
Min. Operating Temperature:	2°C/35°F
Max. Working Pressure:	689kPa/100psi
Min. Working Pressure:	138kPa/20psi
Rated Capacity: VOC	N/A
Rated Capacity: CTO	18,927 litres / 5,000 gallons
Flow Rate:	0.75 gpm
Micron Rating:	5 m
Single Filter:	10.25h X 3.35d Inch/260h X 85.15d MM

***REPLACEMENT FOR: EV9617-05**

**SGF
96-06
CTO**



12

Reductions & Applications:

- CTO, Sediment,
- Food Service, Vending Machine, Coffee Service

REPLACEMENT FOR:

EV9617-05

Max. Operating Temperature:	38°C/100°F
Min. Operating Temperature:	2°C/35°F
Max. Working Pressure:	689kPa/100psi
Min. Working Pressure:	138kPa/20psi
Rated Capacity: VOC	N/A
Rated Capacity: CTO	11,356 litres / 3,000 gallons
Flow Rate:	0.75 gpm
Micron Rating:	5 m
Single Filter:	10.25h X 3.35d Inch/260h X 85,15d MM

***REPLACEMENT FOR: EV9691-56**

13



Reductions & Applications:

- VOC, CTO, Cyst, Sediment,
- Beverage Fountain

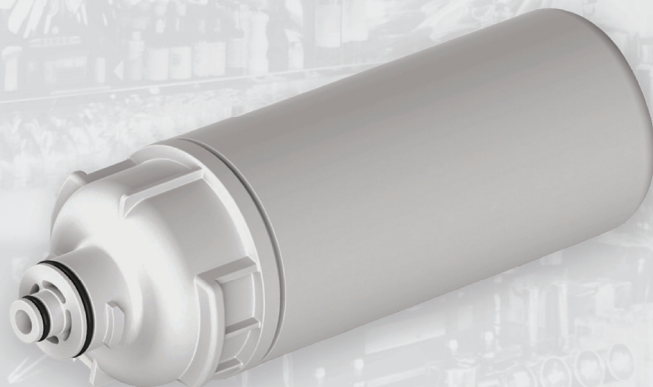


REPLACEMENT FOR:

EV9691-56, EV9691-76

Max. Operating Temperature:	38°C/100°F
Min. Operating Temperature:	2°C/35°F
Max. Working Pressure:	689kPa/100psi
Min. Working Pressure:	138kPa/20psi
Rated Capacity: VOC	34,068 litres / 9000 gallons
Rated Capacity: CTO	109,776 litres / 29,000 gallons
Flow Rate:	1.67 gpm
Micron Rating:	0.5 m
Single Filter:	10.25h X 3.35d Inch/260h X 85.15d MM

***REPLACEMENT FOR: EV9691-76**



14

Reductions & Applications:

- VOC, CTO, Cyst, Sediment, Scale
- Steam and Combi Ovens

REPLACEMENT FOR:

EV9691-76, EV9691-56

Max. Operating Temperature:	38°C/100°F
Min. Operating Temperature:	2°C/35°F
Max. Working Pressure:	689kPa/100psi
Min. Working Pressure:	138kPa/20psi
Rated Capacity: VOC	34,068 litres / 9,000 gallons
Rated Capacity: CTO	109,776 litres / 29,000 gallons
Flow Rate:	1.67 gpm
Micron Rating:	0.5 m
Single Filter:	10.25h X 3.35d Inch/260h X 85.15d MM

***REPLACEMENT FOR: EV9691-66**

15



Reductions & Applications:

- CTO, Sediment,
- Beverage Fountain



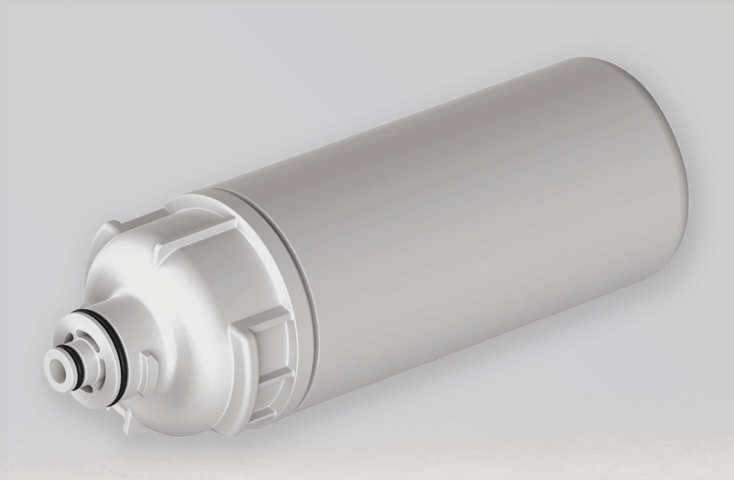
REPLACEMENT FOR:

EV9691-66

Max. Operating Temperature:	38°C/100°F
Min. Operating Temperature:	2°C/35°F
Max. Working Pressure:	689kPa/100psi
Min. Working Pressure:	138kPa/20psi
Rated Capacity: VOC	N/A
Rated Capacity: CTO	22,712 litres / 6,000 gallons
Flow Rate:	1.67 gpm
Micron Rating:	5 m
Single Filter:	10.25h X 3.35d Inch/260h X 85.15d MM

***REPLACEMENT FOR: EV9691-86**

**SGF
96-10
CTO-S**



16

Reductions & Applications:

- CTO, Sediment, Scale
- Steam and Combi Ovens, Coffee Service

REPLACEMENT FOR:

EV9691-86

Max. Operating Temperature:	38°C/100°F
Min. Operating Temperature:	2°C/35°F
Max. Working Pressure:	689kPa/100psi
Min. Working Pressure:	138kPa/20psi
Rated Capacity: VOC	N/A
Rated Capacity: CTO	22,712 litres / 6,000 gallons
Flow Rate:	1.67 gpm
Micron Rating:	5 m
Single Filter:	10.25h X 3.35d Inch/260h X 85.15d MM

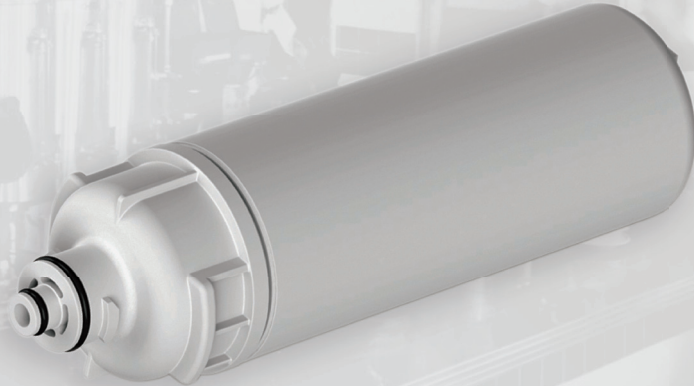
***REPLACEMENT FOR: EV9627-15**

17



Reductions & Applications:

- CTO, Sediment,
- Food Service, Vending Machine, Coffee Service



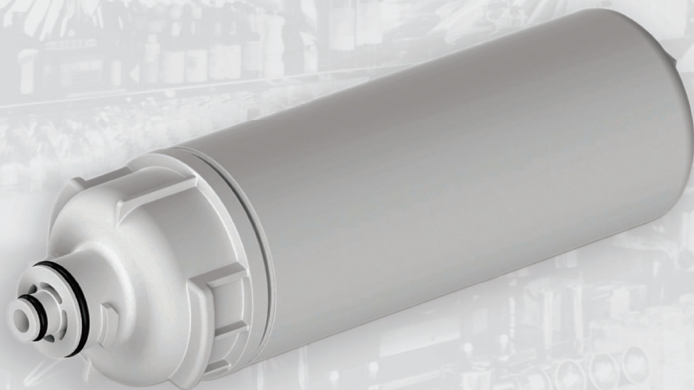
REPLACEMENT FOR:

EV9627-15

Max. Operating Temperature:	38°C/100°F
Min. Operating Temperature:	2°C/35°F
Max. Working Pressure:	689kPa/100psi
Min. Working Pressure:	138kPa/20psi
Rated Capacity: VOC	N/A
Rated Capacity: CTO	33,879 litres / 8,950 gallons
Flow Rate:	0.75 gpm
Micron Rating:	5 m
Single Filter:	11.25h X 3.35d Inch/283h X 85.15d MM

***REPLACEMENT FOR: EV9617-36**

**SGF
96-12
CTO-S**



18

Reductions & Applications:

- CTO, Sediment, Scale
- Food Service, Vending Machine, Coffee Service

REPLACEMENT FOR:

EV9617-36

Max. Operating Temperature:	38°C/100°F
Min. Operating Temperature:	2°C/35°F
Max. Working Pressure:	689kPa/100psi
Min. Working Pressure:	138kPa/20psi
Rated Capacity: VOC	N/A
Rated Capacity: CTO	22,712 litres / 6,000 gallons
Flow Rate:	1.67 gpm
Micron Rating:	5 m
Single Filter:	11.25h X 3.35d Inch/283h X 85.15d MM

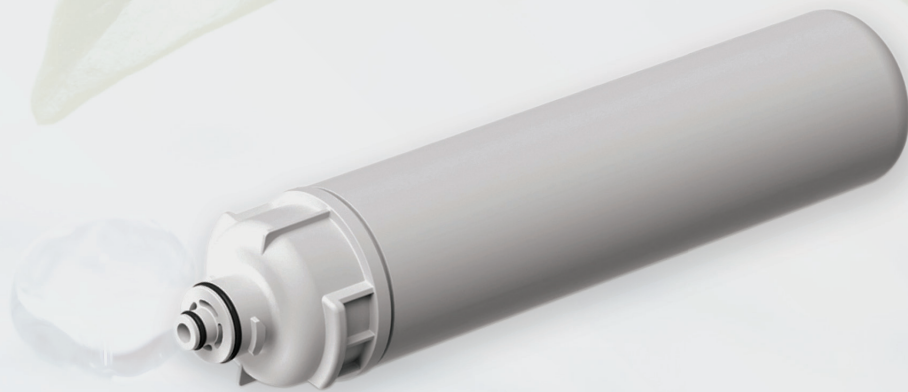
***REPLACEMENT FOR: EV9590-06**



19

Reductions & Applications:

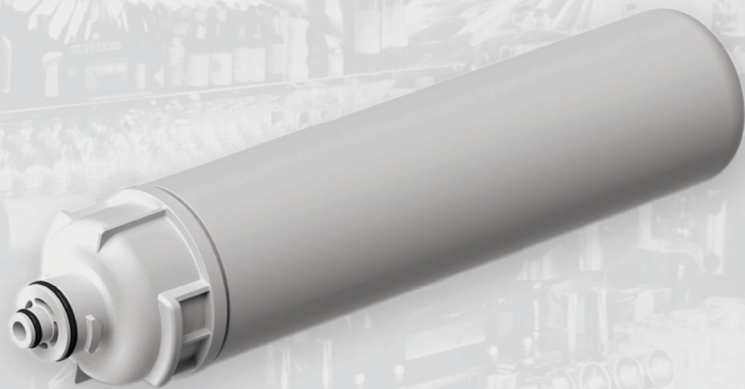
- VOC, CTO, Cyst, Sediment, Lead,
- Cold Cup Vending



REPLACEMENT FOR:

EV9590-06, EV9611-00, EV9612-51, EV9601-00

Max. Operating Temperature:	38°C/100°F
Min. Operating Temperature:	2°C/35°F
Max. Working Pressure:	689kPa/100psi
Min. Working Pressure:	138kPa/20psi
Rated Capacity: VOC	11,356 litres / 3,000 gallons
Rated Capacity: CTO	109,776 litres / 29,000 gallons
Flow Rate:	0.75 gpm
Micron Rating:	0.5 m
Single Filter:	15h X 3.35d Inch/368h X 85.15d MM

***REPLACEMENT FOR: EV9635-26**

20

Reductions & Applications:

- VOC, CTO, Cyst, Sediment, Lead, Scale
- Water Coolers, Drinking Fountains, Hot Cup Vending, Food Service, Vending Machine, Coffee Service

REPLACEMENT FOR:

EV9635-26, EV9272-00, EV9668-24, EV9601-00, EV9612-51, EV9635-06,
EV9634-06, EV9612-66, EV9611-00, EV9612-76

Max. Operating Temperature:	38°C/100°F
Min. Operating Temperature:	2°C/35°F
Max. Working Pressure:	689kPa/100psi
Min. Working Pressure:	138kPa/20psi
Rated Capacity: VOC	11,356 litres / 3,000 gallons
Rated Capacity: CTO	109,776 litres / 29,000 gallons
Flow Rate:	0.75 gpm
Micron Rating:	0.5 m
Single Filter:	15h X 3.35d Inch/368h X 85.15d MM

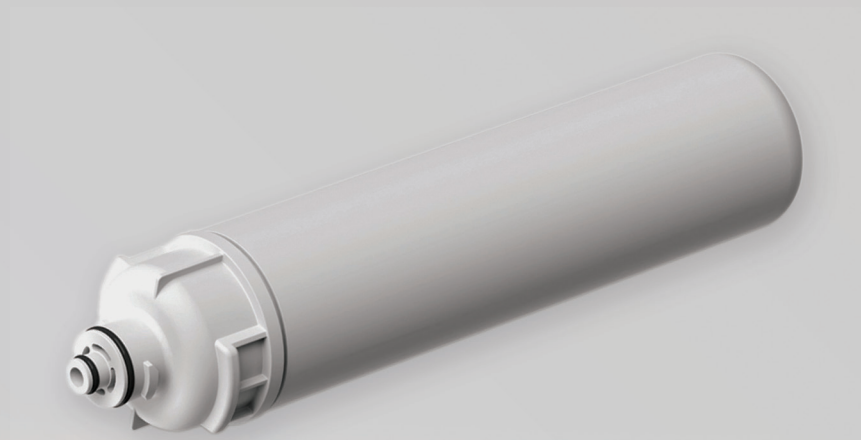
***REPLACEMENT FOR: EV9612-50**



21

Reductions & Applications:

- VOC, CTO, Cyst, Sediment, Chloramine, Lead (SILVER-NANO) (inhibits growth of bacteria), Scale
- Coffee Service

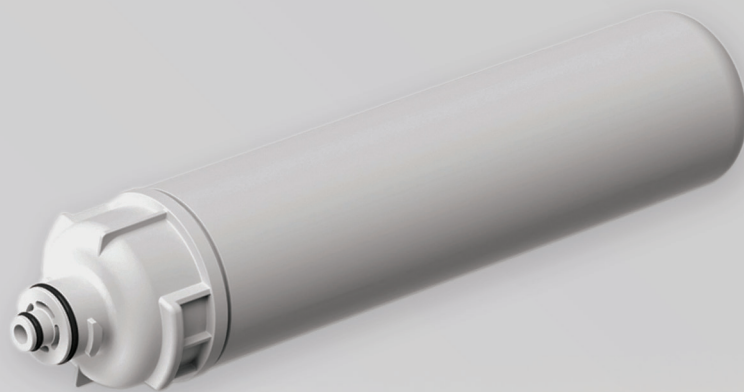


REPLACEMENT FOR:

EV9612-50

Max. Operating Temperature:	38°C/100°F
Min. Operating Temperature:	2°C/35°F
Max. Working Pressure:	689kPa/100psi
Min. Working Pressure:	138kPa/20psi
Rated Capacity: VOC	11,356 litres / 3000 gallons
Rated Capacity: CTO	34,069 litres / 9,000 gallons
Flow Rate:	0.75 gpm
Micron Rating:	0.5 m
Single Filter:	15h X 3.35d Inch/368h X 85.15d MM

***REPLACEMENT FOR: EV9617-76**



22

Reductions & Applications:

- CTO, Sediment, Scale
- Food Service, Vending Machine, Coffee Service, Ice, Tea

REPLACEMENT FOR:

EV9617-76, EV9607-25, EV9607-10

Max. Operating Temperature:	38°C/100°F
Min. Operating Temperature:	2°C/35°F
Max. Working Pressure:	689kPa/100psi
Min. Working Pressure:	138kPa/20psi
Rated Capacity: VOC	N/A
Rated Capacity: CTO	37,854 litres / 10,000 gallons
Flow Rate:	0.75 gpm
Micron Rating:	5 m
Single Filter:	15h X 3.35d Inch/368h X 85.15d MM

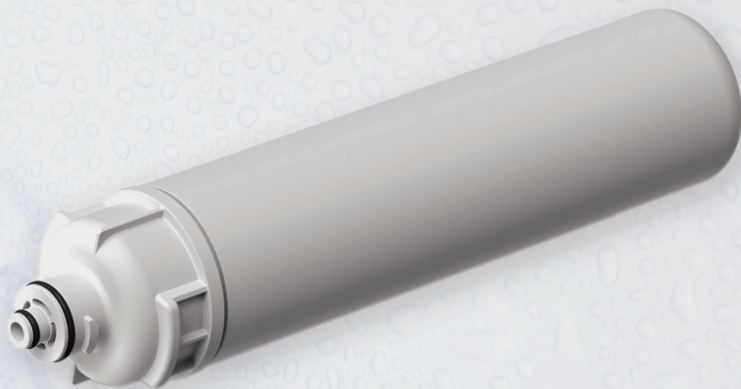
***REPLACEMENT FOR: EV9606-51**

23



Reductions & Applications:

- CTO, Cyst, Sediment, Scale
- Ice



REPLACEMENT FOR:

EV9606-51

Max. Operating Temperature:

38°C/100°F

Min. Operating Pressure:

2°C/35°F

Max. Working Pressure:

689kPa/100psi

Min. Working Pressure:

138kPa/20psi

Rated Capacity: VOC

N/A

Rated Capacity: CTO

109,776 litres / 29,000 gallons

Flow Rate:

1.67 gpm

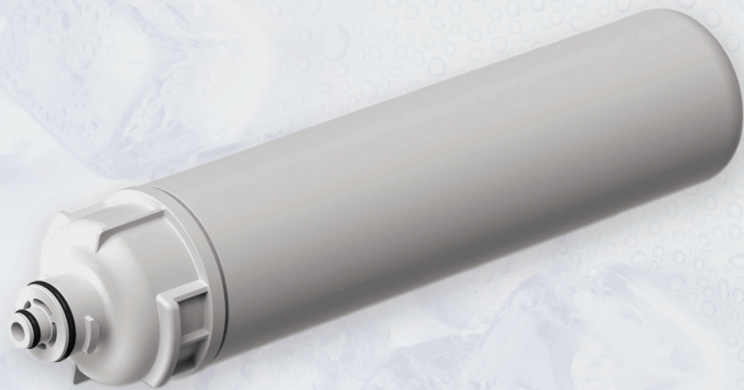
Micron Rating:

0.5 m

Single Filter:

15h X 3.35d Inch/368h X 85.15d MM

***REPLACEMENT FOR: EV9692-21**



24

Reductions & Applications:

- VOC, CTO, Cyst, Sediment (SILVER-NANO) (inhibits growth of bacterial),
- Beverage Fountain, Combination System

REPLACEMENT FOR:

EV9692-21, EV9692-31

Max. Operating Temperature:	38°C/100°F
Min. Operating Temperature:	2°C/35°F
Max. Working Pressure:	689kPa/100psi
Min. Working Pressure:	138kPa/20psi
Rated Capacity: VOC	56,781 litres / 15,000 gallons
Rated Capacity: CTO	109,776 litres / 29,000 gallons
Flow Rate:	1.67 gpm
Micron Rating:	0.5 m
Single Filter:	15h X 3.35d Inch/368h X 85.15d MM

***REPLACEMENT FOR: EV9693-16**

25



Reductions & Applications:

- VOC, CTO, Cyst, Sediment (SILVER-NANO) (inhibits growth of bacterial), Scale
- Beverage Fountain, Combination System, Ice, Steam and Combi Ovens, Coffee Service

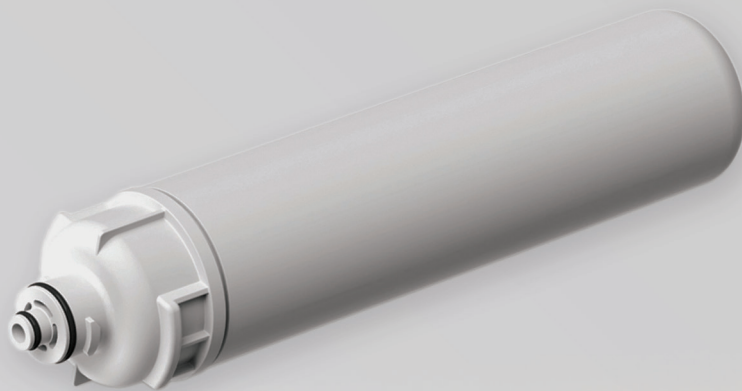


REPLACEMENT FOR:

EV9693-16, EV9692-21, EV9692-31

Max. Operating Temperature:	38°C/100°F
Min. Operating Temperature:	2°C/35°F
Max. Working Pressure:	689kPa/100psi
Min. Working Pressure:	138kPa/20psi
Rated Capacity: VOC	56,781 litres / 15,000 gallons
Rated Capacity: CTO	109,776 litres / 29,000 gallons
Flow Rate:	1.67 gpm
Micron Rating:	0.5 m
Single Filter:	15h X 3.35d Inch/368h X 85.15d MM

***REPLACEMENT FOR: EV9617-16**



26

Reductions & Applications:

- CTO, Sediment,
- Ideal for Problem Water Areas Food Service, Vending, Coffee Service, Beverage and Food Applications

REPLACEMENT FOR:

EV9617-16, EV9781-10

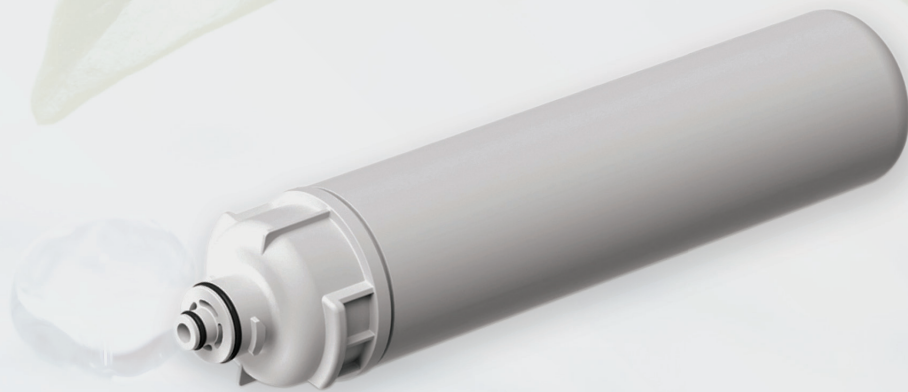
Max. Operating Temperature:	38°C/100°F
Min. Operating Temperature:	2°C/35°F
Max. Working Pressure:	689kPa/100psi
Min. Working Pressure:	138kPa/20psi
Rated Capacity: VOC	N/A
Rated Capacity: CTO	37,854 litres / 10,000 gallons
Flow Rate:	1.67 gpm
Micron Rating:	5 m
Single Filter:	15h X 3.35d Inch/368h X 85.15d MM



Reductions & Applications:

- CTO, Sediment, Scale
- Beverage and Food Applications

***REPLACEMENT FOR: EV9617-26**



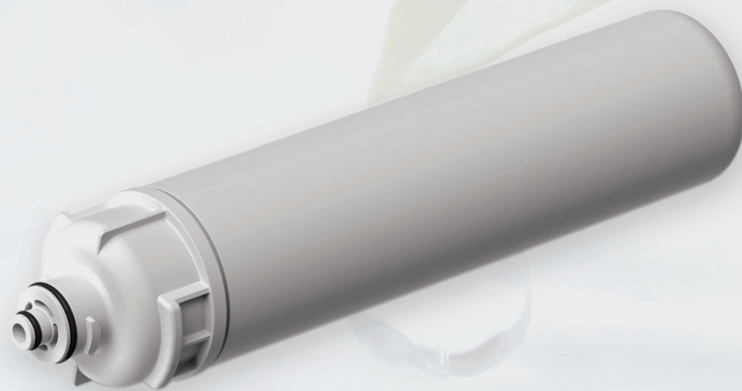
REPLACEMENT FOR:

EV9781-12, EV9617-26

Max. Operating Temperature:	38°C/100°F
Min. Operating Temperature:	2°C/35°F
Max. Working Pressure:	689kPa/100psi
Min. Working Pressure:	138kPa/20psi
Rated Capacity: VOC	N/A
Rated Capacity: CTO	37,854 litres / 10,000 gallons
Flow Rate:	1.67 gpm
Micron Rating:	5 m
Single Filter:	15h X 3.35d Inch/368h X 85.15d MM

***REPLACEMENT FOR: EV9693-21**

SGF
96-22
VOC-AG



28

Reductions & Applications:

- VOC, CTO, Cyst, Sediment (SILVER-NANO) (inhibits growth of bacterial),
- Fountain Combination Systems

REPLACEMENT FOR:

EV9693-21, EV9693-31

Max. Operating Temperature:	38°C/100°F
Min. Operating Temperature:	2°C/35°F
Max. Working Pressure:	689kPa/100psi
Min. Working Pressure:	138kPa/20psi
Rated Capacity: VOC	56,781 litres / 15,000 gallons
Rated Capacity: CTO	109,776 litres / 29,000 gallons
Flow Rate:	2.5 gpm
Micron Rating:	0.5 m
Single Filter:	15h X 3.35d Inch/368h X 85.15d MM

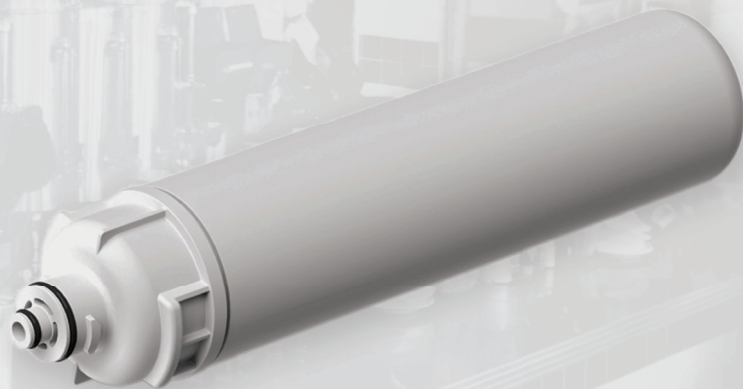
***REPLACEMENT FOR: EV9693-31**

29



Reductions & Applications:

- VOC, CTO, Cyst, Sediment, Lead, Scale (SILVER-NANO) (inhibits growth of bacteria)
- Ice, Steam and Combi Ovens, Coffee Service, Water Coolers, Drinking Fountains



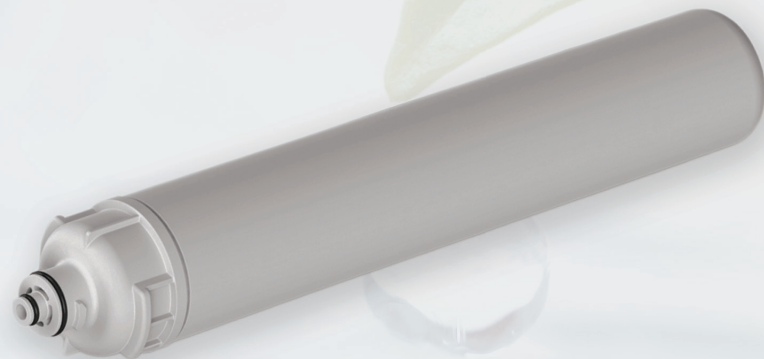
REPLACEMENT FOR:

EV9693-31, EV9693-21, EV9635-01, EV9635-06

Max. Operating Temperature:	38°C/100°F
Min. Operating Temperature:	2°C/35°F
Max. Working Pressure:	689kPa/100psi
Min. Working Pressure:	138kPa/20psi
Rated Capacity: VOC	56,781 litres / 15,000 gallons
Rated Capacity: CTO	109,776 litres / 29,000 gallons
Flow Rate:	2.5 gpm
Micron Rating:	5 m
Single Filter:	15h X 3.35d Inch/368h X 85.15d MM

***REPLACEMENT FOR: EV9607-03**

SGF
96-24
VOC-L



30

Reductions & Applications:

- VOC, CTO, Cyst, Sediment, Lead,
- Problem Solving and Special Application Cartridge

REPLACEMENT FOR:

EV9607-03, EV9627-05

Max. Operating Temperature:	38°C/100°F
Min. Operating Temperature:	2°C/35°F
Max. Working Pressure:	689kPa/100psi
Min. Working Pressure:	138kPa/20psi
Rated Capacity: VOC	3,785 litres / 1,000 gallons
Rated Capacity: CTO	113,562 litres / 30,000 gallons
Flow Rate:	0.75 gpm
Micron Rating:	0.5 m
Single Filter:	18.7h X 3.35d Inch/475h X 85.15d MM

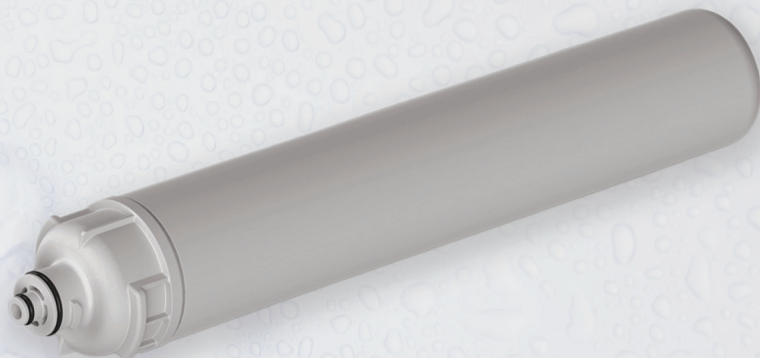
***REPLACEMENT FOR: EV9619-06**



31

Reductions & Applications:

- VOC, CTO, Cyst, Sediment, Lead, Scale
- Water Coolers, Drinking Fountains, Ice



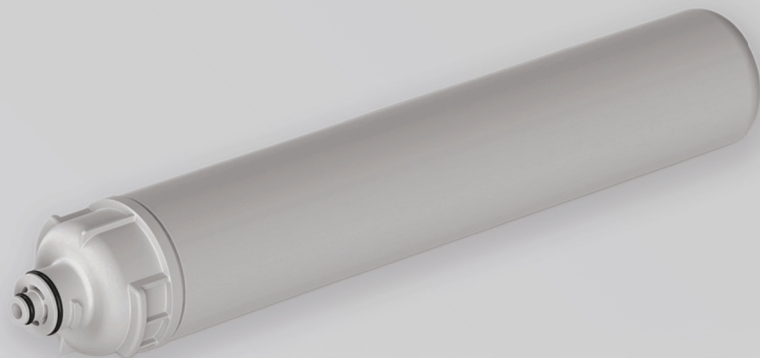
REPLACEMENT FOR:

EV9619-06, EV9272-00, EV9635-26, EV9668-24

Max. Operating Temperature:	38°C/100°F
Min. Operating Temperature:	2°C/35°F
Max. Working Pressure:	689kPa/100psi
Min. Working Pressure:	138kPa/20psi
Rated Capacity: VOC	1,817 litres / 480 gallons
Rated Capacity: CTO	45,425 litres / 12,000 gallons
Flow Rate:	0.75 gpm
Micron Rating:	0.5 m
Single Filter:	18.7h X 3.35d Inch/475h X 85.15d MM

***REPLACEMENT FOR: EV9607-04**

SGF
96-26
VOC-IONX-S



32

Reductions & Applications:

- Sediment (Hardness), Ion exchange, EV9607-04, Scale
- Coffee Service

REPLACEMENT FOR:

EV9607-04, EV9607-01

Max. Operating Temperature:

38°C/100°F

Min. Operating Temperature:

2°C/35°F

Max. Working Pressure:

689kPa/100psi

Min. Working Pressure:

138kPa/20psi

Rated Capacity:

2,000 grains

Flow Rate:

0.75 gpm

Micron Rating:

5 m

Single Filter:

18.7h X 3.35d Inch/475h X 85.15d MM

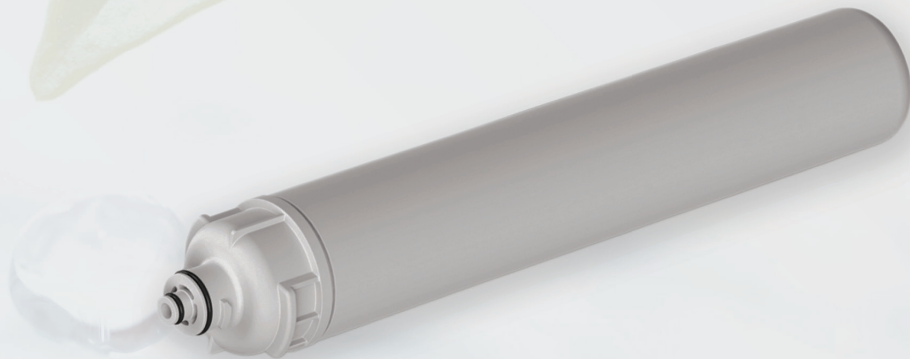
***REPLACEMENT FOR: EV9607-02**

33



Reductions & Applications:

- Acidic corrosion reduction, Ion exchange, EV9607-02,
- Problem Solving and Special Application Cartridge



REPLACEMENT FOR:

EV9607-02

Max. Operating Temperature:

38°C/100°F

Min. Operating Temperature:

2°C/35°F

Max. Working Pressure:

689kPa/100psi

Min. Working Pressure:

138kPa/20psi

Rated Capacity:

Up to 30 grains hardness/gallon

Flow Rate:

0.75 gpm

Micron Rating:

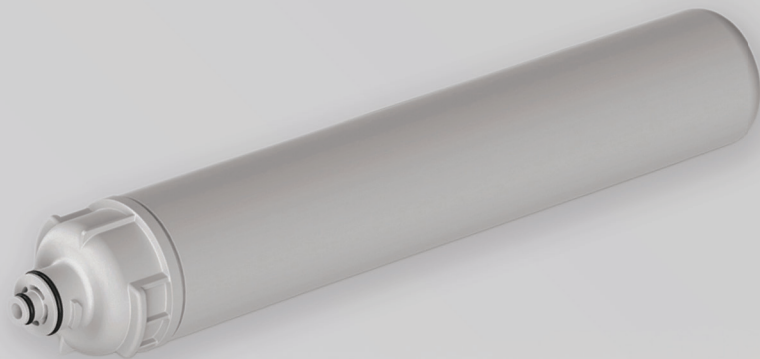
5 m

Single Filter:

18.7h X 3.35d Inch/475h X 85.15d MM

***REPLACEMENT FOR: EV9607-25**

SGF
96-28
CTO



34

Reductions & Applications:

- CTO, Sediment,
- Coffee Service, Ice, Tea

REPLACEMENT FOR:

EV9607-25, EV9607-10

Max. Operating Temperature:	38°C/100°F
Min. Operating Temperature:	2°C/35°F
Max. Working Pressure:	689kPa/100psi
Min. Working Pressure:	138kPa/20psi
Rated Capacity: VOC	N/A
Rated Capacity: CTO	20,062 litres / 5,300 gallons
Flow Rate:	0.75 gpm
Micron Rating:	5 m
Single Filter:	18.7h X 3.35d Inch/475h X 85.15d MM

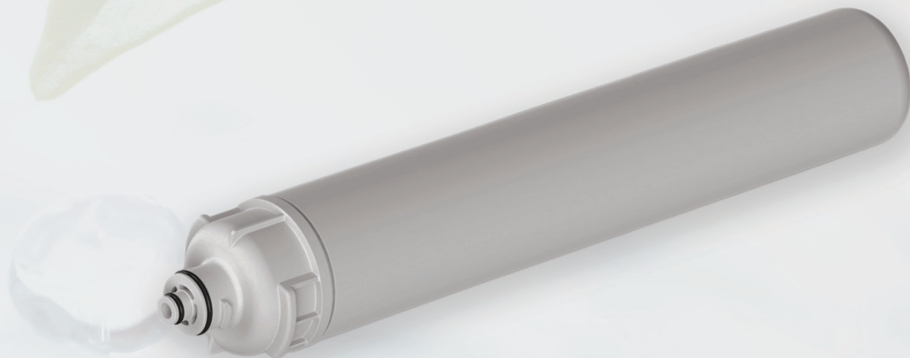
***REPLACEMENT FOR: EV9693-01**

35



Reductions & Applications:

- VOC, CTO, Cyst, Sediment, Chloramine,
- Beverage Fountain

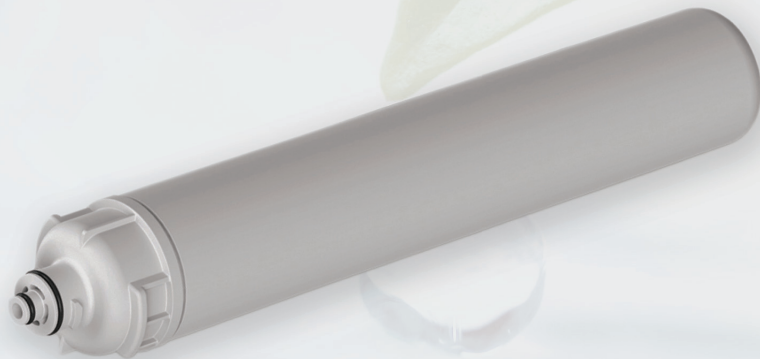


REPLACEMENT FOR:

EV9693-01, EV9627-04, EV9607-41

Max. Operating Temperature:	38°C/100°F
Min. Operating Temperature:	2°C/35°F
Max. Working Pressure:	689kPa/100psi
Min. Working Pressure:	138kPa/20psi
Rated Capacity: VOC	34,069 litres / 9,000 gallons
Rated Capacity: CTO	109,776 litres / 29,000 gallons
Flow Rate:	1.67 gpm
Micron Rating:	0.5 m
Single Filter:	18.7h X 3.35d Inch/475h X 85.15d MM

***REPLACEMENT FOR: EV9613-10**



36

Reductions & Applications:

- VOC, CTO, Cyst, Sediment (SILVER-NANO) (inhibits growth of bacterial),
- Beverage Fountain, Combination System

REPLACEMENT FOR:

EV9613-10, EV9692-71, EV9612-22, EV9606-01, EV9692-61, EV9612-56

Max. Operating Temperature:	38°C/100°F
Min. Operating Temperature:	2°C/35°F
Max. Working Pressure:	689kPa/100psi
Min. Working Pressure:	138kPa/20psi
Rated Capacity: VOC	45,425 litres / 12,000 gallons
Rated Capacity: CTO	109,776 litres / 29,000 gallons
Flow Rate:	1.67 gpm
Micron Rating:	0.5 m
Single Filter:	18.7h X 3.35d Inch/475h X 85.15d MM

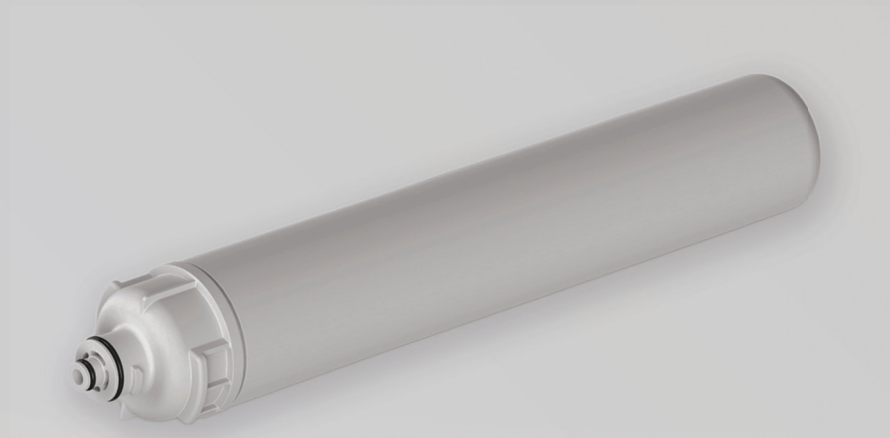
*REPLACEMENT FOR: EV9613-21



37

Reductions & Applications:

- VOC, CTO, Cyst, Sediment (SILVER-NANO) (inhibits growth of bacteria), Scale
- Coffee Service, Ice



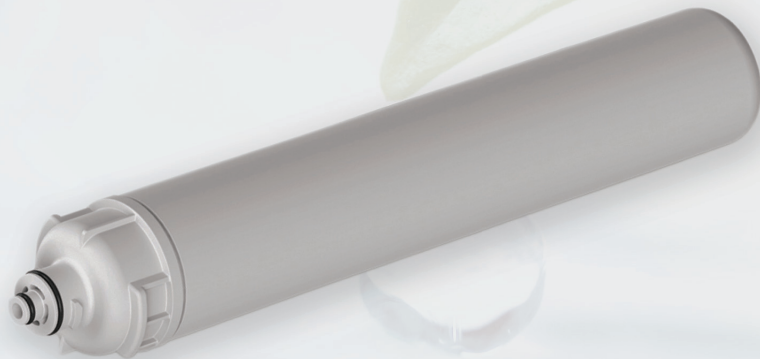
REPLACEMENT FOR:

EV9613-21, EV9612-56, EV9606-01, EV9612-32, EV9612-22

Max. Operating Temperature:	38°C/100°F
Min. Operating Temperature:	2°C/35°F
Max. Working Pressure:	689kPa/100psi
Min. Working Pressure:	138kPa/20psi
Rated Capacity: VOC	45,425 litres / 12,000 gallons
Rated Capacity: CTO	109,776 litres / 29,000 gallons
Flow Rate:	1.67 gpm
Micron Rating:	0.5 m
Single Filter:	18.7h X 3.35d Inch/475h X 85.15d MM

***REPLACEMENT FOR: EV9607-41**

SGF
96-32
VOC-Chlora



38

Reductions & Applications:

- VOC, CTO, Sediment, Chloramine,
- Problem Solving and Special Application Cartridge

REPLACEMENT FOR:

EV9607-41, EV9627-04, EV9693-01, EV9607-41, EV9693-01, EV9607-56, EV9607-56

Max. Operating Temperature:	38°C/100°F
Min. Operating Temperature:	2°C/35°F
Max. Working Pressure:	689kPa/100psi
Min. Working Pressure:	138kPa/20psi
Rated Capacity: VOC	3,028 litres / 800 gallons
Rated Capacity: CTO	113,562 litres / 30,000 gallons
Flow Rate:	1.67 gpm
Micron Rating:	3 m
Single Filter:	18.7h X 3.35d Inch/475h X 85.15d MM

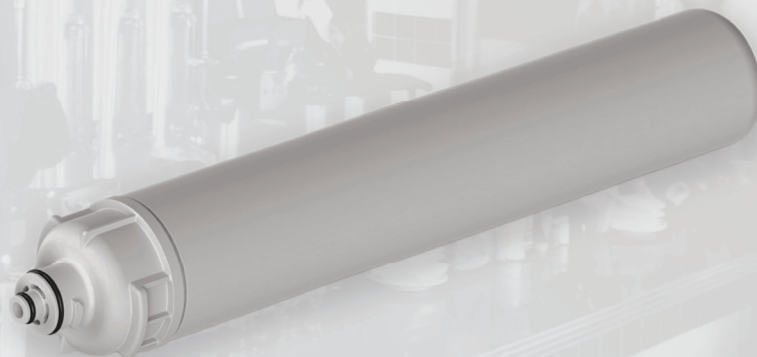
***REPLACEMENT FOR: EV9618-21**

39



Reductions & Applications:

- CTO, Sediment, Scale
- Beverage and Food Applications



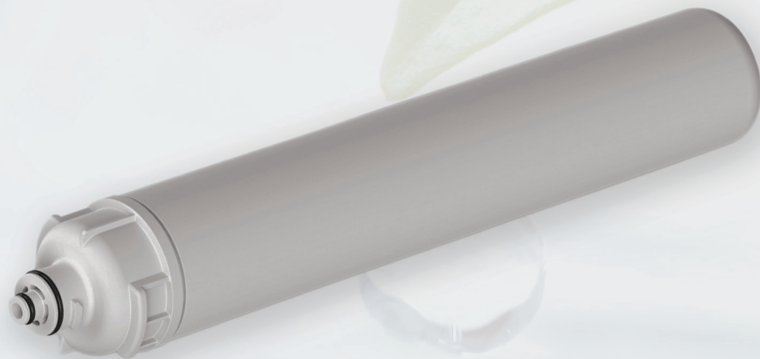
REPLACEMENT FOR:

EV9618-21

Max. Operating Temperature:	38°C/100°F
Min. Operating Temperature:	2°C/35°F
Max. Working Pressure:	689kPa/100psi
Min. Working Pressure:	138kPa/20psi
Rated Capacity: VOC	N/A
Rated Capacity: CTO	37,854 litres / 10,000 gallons
Flow Rate:	1.67 gpm
Micron Rating:	5 m
Single Filter:	18.7h X 3.35d Inch/475h X 85.15d MM

***REPLACEMENT FOR: EV9607-00**

SGF
96-34
CTO



40

Reductions & Applications:

- CTO, Sediment,
- Problem Solving and Special Application Cartridge

REPLACEMENT FOR:

EV9607-00

Max. Operating Temperature:

38°C/100°F

Min. Operating Temperature:

2°C/35°F

Max. Working Pressure:

689kPa/100psi

Min. Working Pressure:

138kPa/20psi

Rated Capacity: VOC

**Varies according to
water conditions**

Rated Capacity: CTO

Flow Rate:

1.67 gpm

Micron Rating:

10 m

Single Filter:

18.7h X 3.35d Inch/475h X 85.15d MM

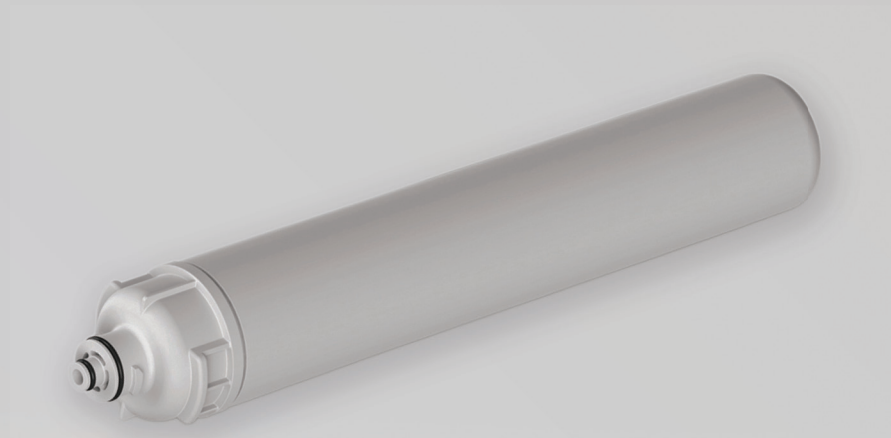
*REPLACEMENT FOR: EV9692-71



41

Reductions & Applications:

- VOC, CTO, Cyst, Sediment (SILVER-NANO) (inhibits growth of bacterial), Scale
- Ice, Steam and Combi Ovens, Coffee Service



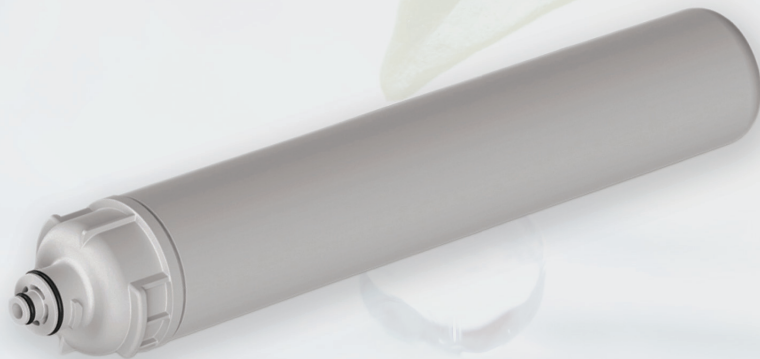
REPLACEMENT FOR:

EV9692-71, EV9692-61

Max. Operating Temperature:	38°C/100°F
Min. Operating Temperature:	2°C/35°F
Max. Working Pressure:	689kPa/100psi
Min. Working Pressure:	138kPa/20psi
Rated Capacity: VOC	94,635 litres / 25,000 gallons
Rated Capacity: CTO	151,416 litres / 40,000 gallons
Flow Rate:	2.5 gpm
Micron Rating:	0.5 m
Single Filter:	18.7h X 3.35d Inch/475h X 85.15d MM

***REPLACEMENT FOR: EV9693-61**

SGF
96-36
VOC



42

Reductions & Applications:

- VOC, CTO, Cyst, Sediment (SILVER-NANO) (inhibits growth of bacterial),
- Fountain, Combination Systems

REPLACEMENT FOR:

EV9693-61, EV9693-71

Max. Operating Temperature:	38°C/100°F
Min. Operating Temperature:	2°C/35°F
Max. Working Pressure:	689kPa/100psi
Min. Working Pressure:	138kPa/20psi
Rated Capacity: VOC	94,635 litres / 25,000 gallons
Rated Capacity: CTO	151,416 litres / 40,000 gallons
Flow Rate:	2.5 gpm
Micron Rating:	0.5 m
Single Filter:	18.7h X 3.35d Inch/475h X 85.15d MM

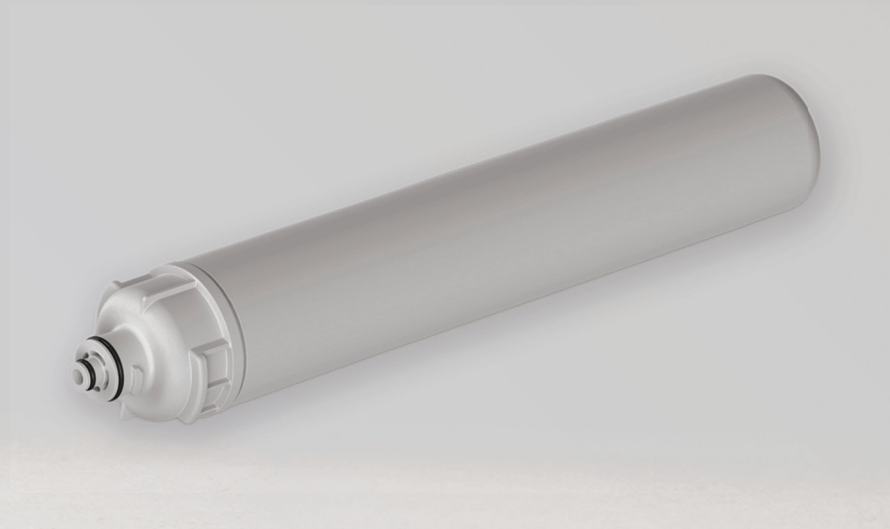
***REPLACEMENT FOR: EV9618-11**



43

Reductions & Applications:

- CTO, Sediment,
- Vending Machine, Coffee Service

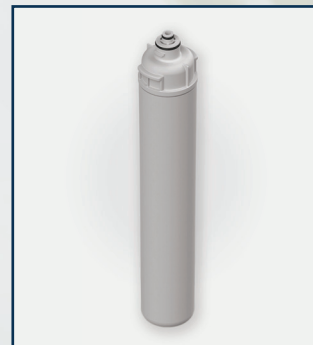
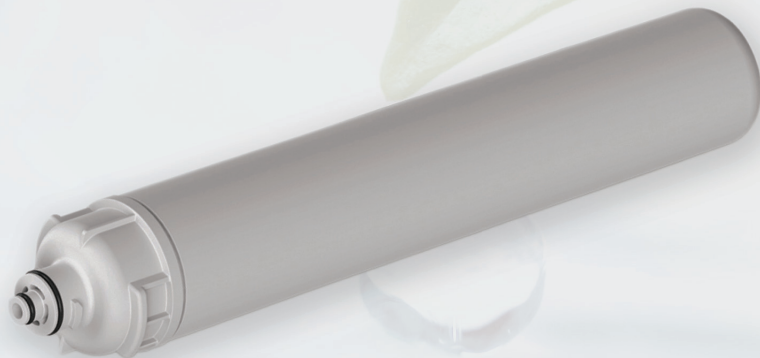


REPLACEMENT FOR:

EV9618-11

Max. Operating Temperature:	38°C/100°F
Min. Operating Temperature:	2°C/35°F
Max. Working Pressure:	689kPa/100psi
Min. Working Pressure:	138kPa/20psi
Rated Capacity: VOC	N/A
Rated Capacity: CTO	52,995 litres / 14,000 gallons
Flow Rate:	2.5 gpm
Micron Rating:	5 m
Single Filter:	18.7h X 3.35d Inch/475h X 85.15d MM

***REPLACEMENT FOR: EV9693-71**



44

Reductions & Applications:

- CTO, Sediment, (SILVER-NANO) (inhibits growth of bacteria), Scale
- Beverage Fountain, Combination System

REPLACEMENT FOR:

EV9693-71, EV9693-61

Max. Operating Temperature:	38°C/100°F
Min. Operating Temperature:	2°C/35°F
Max. Working Pressure:	689kPa/100psi
Min. Working Pressure:	138kPa/20psi
Rated Capacity: VOC	N/A
Rated Capacity: CTO	94,635 litres / 25,000 gallons
Flow Rate:	2.5 gpm
Micron Rating:	5 m
Single Filter:	18.7h X 3.35d Inch/475h X 85.15d MM

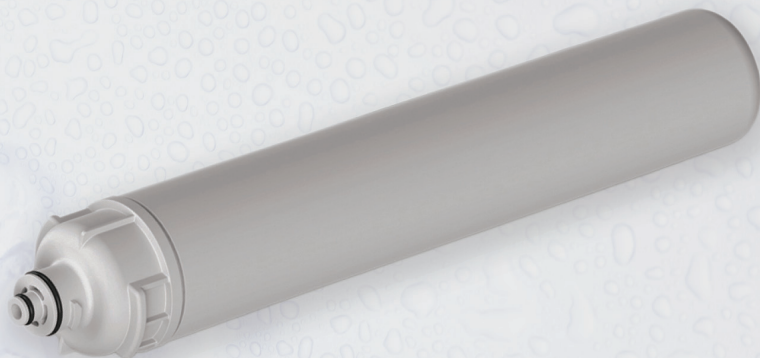
***REPLACEMENT FOR: EV9606-01**

45



Reductions & Applications:

- VOC, CTO, Cyst, Sediment, Scale
- Ice



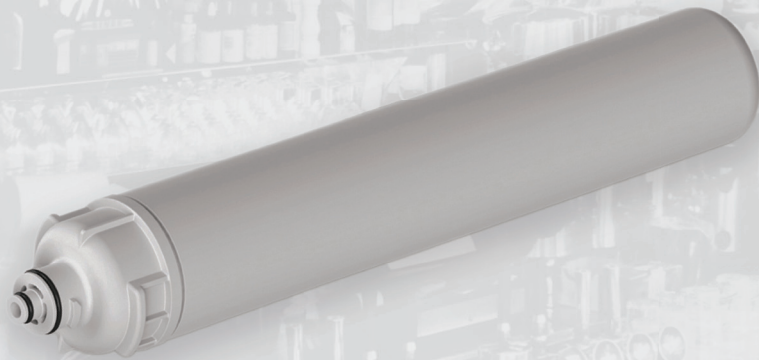
REPLACEMENT FOR:

EV9606-01, EV9612-56, EV9612-22

Max. Operating Temperature:	38°C/100°F
Min. Operating Temperature:	2°C/35°F
Max. Working Pressure:	689kPa/100psi
Min. Working Pressure:	138kPa/20psi
Rated Capacity: VOC	94,635 litres / 25,000 gallons
Rated Capacity: CTO	151,416 litres / 40,000 gallons
Flow Rate:	3.5 gpm
Micron Rating:	0.5 m
Single Filter:	18.7h X 3.35d Inch/475h X 85.15d MM

***REPLACEMENT FOR: EV9627-16**

**SGF
96-40
CTO-S**



46

Reductions & Applications:

- CTO, Sediment, Scale
- Food Service

REPLACEMENT FOR:

EV9627-16

Max. Operating Temperature:	38°C/100°F
Min. Operating Temperature:	2°C/35°F
Max. Working Pressure:	689kPa/100psi
Min. Working Pressure:	138kPa/20psi
Rated Capacity: VOC	N/A
Rated Capacity: CTO	113,562 litres / 30,000 gallons
Flow Rate:	2.5 gpm
Micron Rating:	5 m
Single Filter:	18.7h X 3.35d Inch/475h X 85.15d MM

About Swift Green Filters



Manufactures Green
replacement fridge filters.



Supplies water filtration products,
water drinking systems and solutions.



Executive team with over 25 years
of experience in engineering,
production, sales & marketing.



Commitment to produce products
that offer our customers a healthy
and environmentally friendly alternative.

Why Swift



We are a green product



Cover entire range of replacement filters



We offer healthy margins for retailers

All of our products
are retail ready



English and French



French & Spanish

How are we green & Eco-friendly

Compared to conventional carbon-based filters, Swift Green Filter products are environmentally friendly.



49

Conventional carbon filters releases pollution and emits greenhouse gases into the air during production

By using a new technology that converts emissions into thermal energy reducing pollution and greenhouse gases

By starting the first filter green wave with our stylish clean recyclable packaging and our Eco-friendly filters.

Our goal is continue to build on our green strategy for all future products and development.

Standards are expressed within our green filter brand

Green & Eco-friendly



Coconuts
are picked

Coconuts are charred in a reactor
Methane & VOC
gases are captured
& converted into
thermal energy

**Coconut char
is rotated in
kiln**
This produces
activated carbon

**Granular activated carbon
& carbon blocks**
High performance granular
carbon is produced and
converted into filter products

Product line overview

Fridge filters



Innovative manufacturer of replacement fridge filters.

Supports all major OEM brands

Green technology product

Made in Canada and USA

Certified / WQA Gold 42

Replacement filters & parts



Leading supplier of OEM replacement filters & parts

In stock for direct delivery

Complements our existing product lines.

Filtration systems



Retail & commercial products

Multi stage filtration systems

Delivers the goal of safe clean water

Inexpensive & simple to install