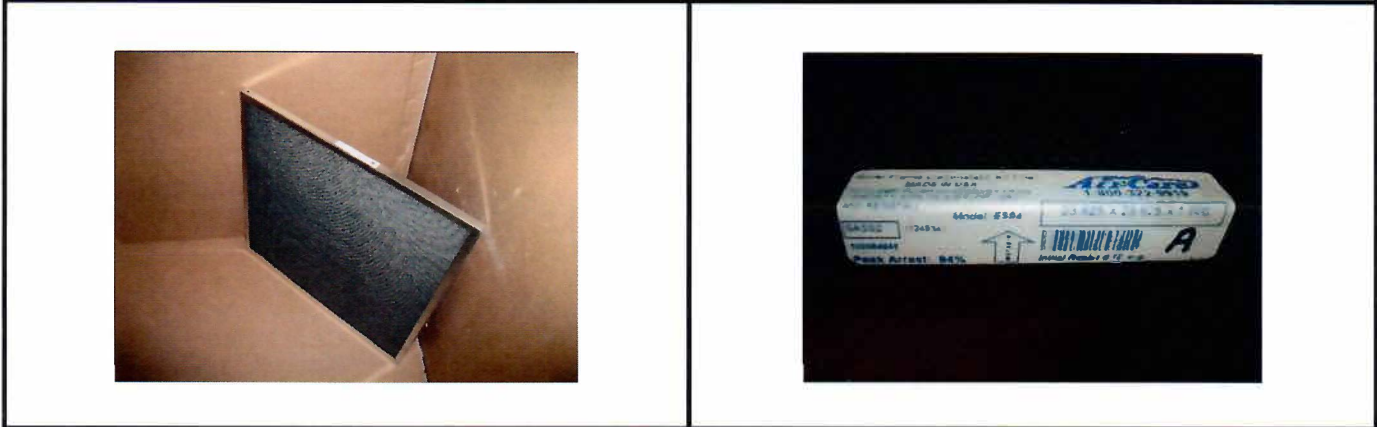
 <p style="text-align: center;">2820 S. English Station Road - Louisville, KY 40299 Tel: (502) 357-0132 Fax (502) 267-8379</p>	<p>Date: 12-May-18 TEST NO. 15-0667</p> <p style="text-align: center;">ASHRAE Standard 52.2-2012 TEST REPORT Initial Efficiency / Resistance / Dust Holding Arrestance</p>
--	---

Filter Description	
Manufacturer Filter Model Part Number Generic Filter Type Nominal Dimensions (H x W x D) Pocket / Pleat Quantity Media Type Est. Gross Media Area Adhesive Type	Air-Care Air Care Electrostatic Silver ES88 Panel 24" x 24" x 1" N/A Synthetic 4.0 Ft ² N/A



Test Conditions			
Loading Dust Type	ASHRAE	Test Air Temp (degrees F.)	71
Barometric Pressure (In. Hg.)	29.62	Relative Humidity (%)	47

Test Results	
Airflow Rate (CFM)	1180
Nominal Face Velocity (fpm)	295
Initial Resistance (in WG)	0.20
Final Resistance (in WG)	1.50
Dust Fed (gms) to Final Resistance	154
E1 (%) Initial Efficiency 0.30 - 1.0 um	5
E2 (%) Initial Efficiency 1.0 - 3.0 um	34
E3 (%) Initial Efficiency 3.0 - 10.0 um	80
Estimated * Minimum Efficiency Reporting Value (MERV)	MERV 8 @ 1180 CFM
* If initial data is minimum	

Comments Tested For: Air-Care			
Final Pressure Drop ("w.c.)	<u>1.50" w.c.</u>	<u>1.00" w.c.</u>	
Dust Holding Capacity (gms)	141	121	
Average Arrestance (%)	91.6	91.3	

Test Performed by:	JPS	Approved By:	
		Test Completed:	12-May-15